

A Publication for the Conscious Woman

Focus *Women* ON *♀* MAGAZINE

Happy New Year

2018



Character Assassination to Silence the Truth
and Opposition

1 in 5 Families Will Lose Resources Under
Administration's Proposed Changes to Safety Net

Five Reasons a Robust Bicennial Census
Benefits All Americans

January/February 2018



Be bold in 2018

More adventure. More time in nature. More giving back—do more in 2018 with Airbnb. Explore new places and possibilities on experiences led by paragliders, gospel singers, and boat captains.

JANUARY/ FEBRUARY 2018

Click to View the latest Issue

www.focusonwomenmagazine.com



2017 was a year of healing revelations and wounded expectations. Within our borders and without, we observed how the freedoms that we hold dear and revere, can be used against us through mis-information pelted at vulnerable audiences through the means of an indifferent Social Media.

We saw how the vulnerabilities of the ideals and tenets that bind us within

the fabric of our Democracy, can be exploited through dubious intent and used to divide us.

We saw how the misunderstanding of e pluribus unum can lead to walls of divisiveness thus leading us down a path of self-destructive self-righteousness.

We saw how women who speak truth to power no longer shrouded and covered in corners of fear and shame can launch the chorus of a thousand voices into a movement, a cause, and a new social mandate of respect and new translation for boundaries.

We saw how if we fail to preserve with vigilance, the rights of a free society, how vulnerable we are to lose them.

To our readers supporters and advertisers, as we contemplate the year's past, may we look towards the New Year with the desire to co-create a society of peaceful relationships, genuine acts of care and concern for others and help preserve a political process of healthy debate, one that is worthy for future generations to inherit and preserve.

May this New Year bring forth the fruits of joyous days and happy times.

All the best, **Joslyn Wolfe**

Publisher, Focus on Women Magazine
(nicbri@focusonwomenmagazine.net)

ADVERTISING:

Acceptance of the advertising or print items does not carry with it an endorsement by the publisher of FOWM, and indemnifies FOWM of any course of action.

- 4 SPOTLIGHT ON AYN DILLARD
- 6 La Femme De Prose - Events
- 7 Columbia Orchestra continues 40th season on 1/27 with Beethoven, Brahms, and a beatboxer!
- 9 How Character Assassination is used to Silence Opposition and the Truth - By Cynthia McClaskey
- 13 "Model minority" myth hides the economic realities of many Asian Americans
- 15 Inspired by Personal Connection to Kidney Disease, Local Designer Launches Bracelet Collection to Benefit NKF Serving Maryland and Delaware
- 17 Native Americans deserve more attention in the police violence conversation
- 18 Five reasons a robust decennial census benefits all Americans
- 20 Angela's Story... DOMESTIC VIOLENCE
- 22 Can we make the fear and hatred stop?
- 24 OLNEY THEATRE CENTER - EVENTS
- 25 Using technology to improve women's safety in Pakistan's urban transit systems
- 27 A Change of Habit - Patty Ptak Kogutec (author)
- 28 EVERYMAN THEATRE - EVENTS

SPOTLIGHT ON AYN DILLARD

“Difficulties exist only so that in overcoming them, we may grow strong. Only those who have suffered and overcome are able to help others.”

--- Ayn Dillard

Author of Daddy Throws Me in the Air - Ayn Dillard takes the reader on an enlightening and transforming journey. She articulates a message of self-awareness and strength that stems from an independent and determined mindset. Ayn says, “I love to write, but most importantly, through my book, I want to bring to light self-awareness through a process of how we can release limiting imprints and negative beliefs that familial and life experiences may leave upon us, in order that we are able to live a more fulfilling and emotionally healthy life - a life of awareness, healing and choice.”

Ayn continues,

“When we have pain, we can either run towards and through it or away from it. At times, we need to run towards it to arrive at release and healing - other times, to step away. It takes awareness to know which will best serve us. If we negate or stuff pain, it will fester creating imprints and beliefs that do not serve our higher purpose which is that of awareness, understanding, acceptance and forgiveness, so we may more

often than not, live in self-acceptance, love and joy. When we are aware and process our emotions, the better we will feel and look. If you want to live well, feel and look youthful and be in your best life, learn to be aware of what you are feeling and why then learn to process though it.” This is certainly true of Ayn who is full of vigor and light.

Her maternal Aunt Sandra knows her well, she comments, “Ayn always loved to explore and loves people. So much that her determination to socialize led to a family story with an unforgettable image. Her father had an extra tall fence built just to keep Ayn safely in the backyard. When he arrived home and was paying the fence builders, he looked towards the backyard to see Ayn’s dress brush over the top of the fence and then vanish. The fence was just an obstacle for her to conquer, so she could continue her exploring.”

Her college sweetheart who has known Ayn for decades, shared similar insights. “She has never known a stranger. She has a big heart and can relate to those who are head of corporations as well as to those who do minimal labor.”, he states.

As for the future, when asked if there are any more books on the horizon, Ayn responds, “ Definitely.” ■

“I learned to fly and my spirit soared and so can you.”

--- Ayn Dillard



ISBN-10: 1619848031
ISBN-13: 978-1619848030

ayn@womenexplode.com
www.womenexplode.com

- 29 One in five families will lose resources under administration's proposed changes to safety net programs
- 31 How We Can Better visualize Analysis of Tax Reform Legislation
- 35 Eleven U.S. Fencers Advance to the Second Day at the Baltimore Women's Sabre World Cup
- 37 "Invisibility is an unnatural disaster": Why funding the 2020 Census matters for Pacific Islanders
- 39 BALTIMORE CENTER STAGE - EVENTS 2017/2018
- 40 Girls on the Run of Central Maryland Names Lisa Martin Energy Award Winner
- 41 Baltimore Center Stage Announces Skeleton Crew Cast and Artistic Team
- 42 WOMEN of IMPACT GALA - Karen Tupek
- 45 eBOOKSTORE - FOWM MAGAZINE

Focus Women ON MAGAZINE

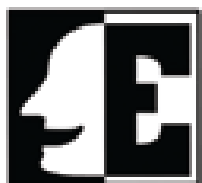
www.focusonwomenmagazine.com
nicbri@focusonwomenmagazine.net

Focus on Women Magazine is a bi-monthly publication for women, to women, and about women which focuses on topics of interest to women and is geared towards a multi-generational audience.

Publisher: Joslyn Wolfe, **Editor:** Kathy Pettway
Design/Production: Robin, fowmag@gmail.com

Focus on Women Magazine (FOWM) is published bi-monthly, on or about the 10th of the month by Focus on Women Magazine LLC, 4615 Oakview Court, Ellicott City, MD 21042. Phone: 410-294-2932. It is available by subscription, or on display stands and at approved public and private venues throughout the Baltimore Metropolitan area, including Baltimore City, Baltimore County, Ellicott City and Columbia. The editorial content of Focus on Women Magazine does not necessarily reflect the views of our advertisers or readers. Focus on Women Magazine is not responsible for editorial comment other than its own. For story ideas, calendar of events, or ads, contact Focus on Women Magazine at nicbri@focusonwomenmagazine.net, or by Fax at 443-759-3001, or by phone at 410-630-1224 or by mail at 4615 Oakview Court, Ellicott City, Maryland 21042 or our second Inner Harbor address at 300 West Lombard Street, Suite 840, Baltimore, Maryland 21201.

© 2007 Focus on Women Magazine.
All rights reserved. No part of this publication can be reproduced without prior express written consent of the publisher.



EVERYMAN THEATRE

ENGAGE. INSPIRE. TRANSFORM.

<http://everymantheatre.org/201617-season>



[more](#)

2016/17 SEASON

Our 2016/17 Season offers laughter and suspense from heart-warming and poignant new plays by rising voices, and a farce about a Resident Company performed by our Resident Company.

WAIT UNTIL DARK

For information about Everyman Theatre, visit www.everymantheatre.org, or call 410.752.2208.

BUY TICKETS

La Femme De Prose

Focus
ON Women
MAGAZINE

La Femme de Prose focuses on women making a difference through written work. The show focuses on the work of women authors, speakers and artists.

2016

ON-DEMAND EPISODES

◆ **RELAUNCH OF LA FEMME DE PROSE - PART 2**

00:58

Join host Musu B. as she interviews authors Margarita Perez, Lane Cobb, Janice Peterson and Terri Jackson. We will feature their current books as they speak on their message they are sharing with the world along...

<http://www.blogtalkradio.com/fowm/2016/02/17/relaunch-of-la-femme-de-prose-part-2>

2017

◆ **TRAUMA CARE EXPERT AND AUTHOR OF "HEALING NEEN" SHARES HER LIFE STORY**

00:31

During her 19-year commitment to crack cocaine she racked up 83 arrests with 66 convictions, lost custody of four children, and, when she wasn't locked up, she slept on a concrete slab under a bridge. Most friends, family...

<http://www.blogtalkradio.com/fowm/2017/12/10/trauma-care-expert-and-author-of-healing-neen-shares-her-life-story>

◆ **A CALL TO ACTION FOR A DOMESTIC VIOLENCE BATTERERS REGISTRY**

00:30

BLOCDV™ is a training and technical assistance program of the Atikal Foundation, created by Kita Williams and Lynn Strange to assess and prevent the lethality of domestic violence disputes and incidents...

<http://www.blogtalkradio.com/fowm/2017/12/10/trauma-care-expert-and-author-of-healing-neen-shares-her-life-story>

◆ **A CAREGIVER'S COMPANION**

00:31

First, it was the author who was diagnosed with an aggressive cancer. Her devoted husband was her caregiver. Then, 12 years later, the situation reversed. Her husband was diagnosed with terminal cancer...

<http://www.blogtalkradio.com/fowm/2017/11/30/a-caregivers-companion>

◆ **STOP DIETING, BINGEING, EMOTIONAL EATING FOR GOOD!**

00:31

How do you stop having your life revolve around food? If you eat too much you feel stuffed and bloated, If you stop eating you feel deprived, which leads to overeating and bingeing. Isabel Foxen Duke says...

<http://www.blogtalkradio.com/fowm/2017/11/29/stop-dieting-bingeing-emotional-eating-for-good>

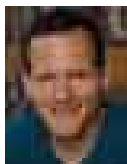
Stay Tuned for La Femme De Prose Book Store's Radio Show, Hooks on Books featuring our finest authors as they talk about the motivations and inner workings of their titles. Visit La Femme De Prose eBookstore for further details at www.focusonwomenmagazine.net

<http://www.blogtalkradio.com/fowm>

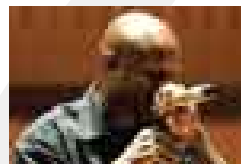
For further information contact: **410-630-1224**

Columbia Orchestra continues 40th season on 1/27 with Beethoven, Brahms, and a beatboxer! Saturday, January 27, 2018 at 7:30pm

Jim Rouse Theatre,



Michael Sheppard, piano



Shodekeh, beatboxer & vocal percussionist

The Columbia Orchestra's 2017-2018 season continues on **Saturday, January 27, 2018**. The program opens with **Deadlock** by **Ruby Fulton** featuring **Baltimore beatboxer Shodekeh**, for whom the piece was written. Next the orchestra welcomes back pianist **Michael Sheppard** to perform **Beethoven's** moody and dramatic **Piano Concerto No. 3**. Finally, **Brahms' sunny D Major Symphony No. 2** will round out the program. Bill Scanlan Murphy, music department faculty member at Howard Community College, will offer a free lecture at 6:30pm. **Tickets** are \$28/\$22 for adults, \$24/\$18 for seniors, and \$12/\$10 for students. A \$3 ticket processing fee will apply. For more information or to **purchase tickets, call (410) 465-8777 or visit www.columbiaorchestra.org**.

Dominic "**Shodekeh**" Talifero is a groundbreaking **beatboxer and vocal percussionist** who pushes the boundaries of the human voice. He currently serves as faculty, musical accompanist and composer for Towson University's Department of Dance and is the founding director of "Embody, A Music Series of the Vocal Arts," which strives for artistic and cultural unity through the many vocal traditions from the world from opera, throat singing, to beat boxing. Imitating and often replacing a drum set, drum machine or drum loop through a series of vocal effects or percussive sounds, beatboxing exemplifies the hip hop philosophy of creating meaningful artistic expressions with limited resources at its most extreme. In recent years, Mr. Talifero has moved from beatboxing's hip hop roots to explore innovative collaborations with a wide range of traditional artists, including Tuvan Throat Singing, Lithuanian Folk Music, Experimental, Funk, Jazz, Rock, Classical, Ballet and various forms and techniques of Modern Dance. He is constantly striving to rhythmically channel the vast spectrum of sounds around him, not just through Music, but via the channels of Science, Culture, History, Mathematics and Ethnomusicology.

Michael Sheppard, pianist, is known as a pianist of dazzling virtuosity and penetrating musicianship. Trained by the legendary Leon Fleisher and the scholarly but passionate Ann Schein at the Peabody Conservatory, Michael was selected by the American Pianists Association as a Classical Fellow. This designation led to the recording of his Harmonia Mundi CD of 2007 and another recording soon to be released. The APA fellowship provided a tour of Southern Asia and the Middle East, done in collaboration with the US Department of State. During this tour, he performed with numerous national orchestras, played chamber music with resident ensembles, and played in solo recitals as well as diplomatic events. Back in the US, Mr. Sheppard made his debut at the Kennedy Center and has since performed standard piano repertoire with numerous orchestras nationwide. He has returned to Asia, Europe and performed at Carnegie Hall as well. Receiver of a Tanglewood Music Center Fellowship and another from the LaGesse Foundation, Sheppard took a major prize in the National Federation of Music Clubs National Competition. Michael Sheppard is a native of Philadelphia and resides in Baltimore where he often enjoys performing chamber music with Baltimore Symphony Principal cellist Dariusz Skorazewski and Hong Kong Philharmonic Concertmaster Igor Yuzefovich in the Monument Trio. He is also a teacher at the Baltimore School for the Arts. o



Tickets:

\$28/\$22 Adult,

\$12/\$10 Student.

\$24/\$18 Senior,

\$3 ticket processing fee will apply



The Columbia Orchestra thanks Vantage House, the Maryland State Arts Council, the Howard County Arts Council, and the Community Foundation of Howard County for their support.



JOHNS HOPKINS
MEDICINE

Healthy Volunteers Needed

We are looking for healthy adults, ages **18-55**, to participate in a clinical research study.

PURPOSE: The purpose of this study is to find out whether an investigational (research) blood test is able to help confirm a diagnosis of ADHD in adults.

You may qualify if you:

- *are a healthy female or male, ages 18-55
- *have no clinical history of ADHD or Bipolar Disorder

Qualified participants will receive monetary compensation.

For study qualification/more information please contact:

Bernice Frimpong (Research Program Coordinator)
443-287-2144 or bfrimpong2@jhmi.edu



Principal Investigator – Ekaterina Stepanova, MD, PhD
IRB# 00086805

Approved February 28, 2017



JOHNS HOPKINS
MEDICINE

Healthy Volunteers Needed

Looking for healthy adults, ages **18-55**, to participate in a clinical research study.

PURPOSE: The purpose of this study is to find out whether an investigational (research) blood test is able to help confirm a diagnosis of ADHD in adults.

You may qualify if you:

- *are a healthy female or male, ages 18-55
- *have no clinical history of ADHD or Bipolar Disorder

Qualified participants will receive monetary compensation.

For study qualification/more information please contact:

Bernice Frimpong (Research Program Coordinator)
443-287-2144 or bfrimpong2@jhmi.edu



Principal Investigator – Ekaterina Stepanova, MD, PhD
IRB# 00086805

Approved February 28, 2017

How Character Assassination is used to Silence Opposition and the Truth

By Cynthia McClaskey

I would like to talk about a tactic that religion and secular society use in order to stifle opposing or differing views or, silence victims of abuse. This tactic is called Character Assassination. Character assassination is one of the many weapons used in order to silence someone who is trying to warn people about abuse, deception and lies. All throughout history, there are countless examples of this taking place. Not only this, but this weapon has been used in the “name of God” in order to harm those that dare to speak out about their abuses. Early church history not only shows us this tactic but, it also attaches the death penalty to it. It was nothing for the church and its religious leaders to not only shame and slander those who disagreed with their doctrinal beliefs, but it was necessary for the church to completely SILENCE those who disagreed. Early religious leaders had a proven method of attack that succeeded in silencing millions of victims.

Today, this tactic is alive and well through cultures the world over. It is used against anyone that decides to step forward and talk about their abuse; whether that abuse is domestic, emotional, spiritual, physical or sexual. It is also used against those that disagree with religious rules or dogmas. History shows us vividly that those that said they loved God and were his followers committed some of the most heinous crimes against humanity the world has ever known. Many of these crimes I have cited in my book, *Religion's Cell*. All of these crimes were done “in the name of God.” Not much has changed today. Christians today, still commit crimes against women and children “in the name of God” that will boggle the mind.

The end result of this tactic is to get people to not believe the person that these religious leaders wish to silence. To show the extent to which some people will go in silencing opposition

in doctrine or belief or, silence a victim of abuse in the church, or silence the TRUTH, I would like to talk about William Tyndale (1536). Everyone should know who this person is since he translated the Bible into English.

Here's what happened to William Tyndale. Let's see if the same tactics used against him are alive and well today against those that dare to disagree, expose lies or, abuse. Here's Tyndale's story. Throughout, I will expose tactics that have infiltrated society as a whole and are used regularly to silence victims of abuse and those that present opposing belief systems.



The Martyrdom of William Tyndale (1536)

The New Foxes Book of Martyrs,

We now come to the story of William Tyndale who dug up the foundation of the pope's government. Consequently, the great prince of darkness, having malice against Tyndale, left no stones unturned in his efforts to trap Tyndale, betray him, and take his life.

Tyndale was born near the border of Wales in 1494. He was educated at Oxford and Cambridge, and soon after began his life work of translating the Bible into English. When he left Cambridge, he became schoolmaster to the children of a Master Welch, a knight of Gloucestershire in England.

Master Welch served outstanding dinners, and so was often visited by the educated and high-ranking officials of the church. Being a member of the household, Tyndale ate dinner with them and joined in their discussions about such people as Martin Luther, the German theologian, and Desiderius Erasmus, the Dutch Renaissance scholar and Roman Catholic theologian — and took a hardy part in their discussions about church controversies and questions about the Scriptures.

Since Tyndale was well educated and had devoted himself to studying God's Word, he never hesitated to give them his judgment about scriptural matters in plain and simple words. When they disagreed with him, he showed them in the Bible what the Scriptures said and how they were wrong in their beliefs and doctrines. This happened frequently at the Welch's home, and the local clergy soon grew weary of Tyndale's constant references to the Scriptures and criticism of their doctrines, and began to bear a secret grudge against him in their hearts.

It wasn't too long before the clergy invited Master and Lady Welch to a banquet without Tyndale, and immediately began to expound their erroneous doctrines freely and without resistance. Undoubtedly they planned this in an attempt to turn Master Welch and his wife against Tyndale and back to their doctrines.

Tactic #1:

Try to influence those closest to the victim, against him. Plant the seeds of doubt regarding his character or opposing beliefs by twisting scripture to prove yours. Use God's judgment as a tool to incite fear and bring friends and family under the control of the clergy, causing them to turn their backs on the victim. I cannot express how many times this has been used on victims of abuse in the churches I am familiar with. Whole families were divided by this tactic. This is not a testimony becoming of anyone that names the name of Christ or, claims to believe in a holy and merciful God.

Outside of the church, this tactic is used to influence others against victims of abuse. They are labeled as crazy, liars, troublemakers. Those closest to the victim are pulled aside and filled with all manner of slander and gossip so that others will not believe what victims have to say.

In this they almost succeeded, for no sooner had Master and Lady Welch returned home, then they began to argue with Tyndale about the things the priests had talked about at the banquet. Tyndale used the Scriptures and began to reason with them how the things they had been told were wrong.

Then Lady Welch, somewhat indignantly, said to him, "One of the doctors [of divinity] who was there can afford to spend one-hundred pounds whenever he wishes; and another, two-hundred pounds; and another, three-hundred pounds. So for what reason should we

believe you instead of them?"

Tyndale saw that it would do no good to answer her, so after that he talked very little about such matters. He was at that time, however, working on a translation of Erasmus's book, *The Manual of the Christian Knight*, which had been published in 1509, and he gave his master and lady a copy of this translation and asked them to read it. They did, and from then on few of the clergymen were invited to their house for dinner, and when they were invited they were not given the opportunity to expound their papal doctrine freely.

As this continued and the clergy realized that Tyndale's growing influence with the Welch's was the reason for it, they began to gather together and talk against Tyndale in alehouses and other places, saying that what he was teaching was heresy. They also accused him of this to the bishop's chancellor [secretary] and some of the bishop's officers.

Tactic #2:

Spread slander and gossip to everyone you know in order to rally others to your cause against the "heretic." Today, this would be done via the internet, through blogs and social media. Whether in religion or secular society, those that speak out about abuses will be evil spoken of wherever the abuser and his followers go.

As a result, the chancellor ordered the priests to appear before him, and ordered Tyndale to be there also. Tyndale had little doubt that the session was not called for the priests, but to make accusations and threats against him. So on

the way he prayed hard and silently to God that He would give him the strength to stand fast in the truth of His Word.

When the time came to appear before the chancellor, he was threatened, reviled, and talked to as though he were a

dog. Many things were charged against him, but no one came forth to prove the charges, even though all the priests from the area were there. So Tyndale escaped out of their grasp and went back to Master Welch.

Tactic #3:

Deceptively lure the heretic into a group meeting designed to attack and defame him. Treat and talk to him like he is of no value. Make him feel worthless and guilty. Accuse him of all manner of impropriety and sin. Do this in front of everyone so the group can gang up on him. (This is emotional abuse, by the way.) Anyone that is exposing abuse and lies will be treated in this manner. This secondary abuse is aimed at silencing and shaming a victim.

Many of the leaders in the cult I came out of have pulled this stunt. They call a meeting with the person that is in opposition or, exposing abuse, and the person unsuspectingly shows up to a room full of people ready to attack and accuse.

Living near the Welch's was a doctor of divinity and former secretary to the bishop who had been friendly toward Tyndale for some time. Tyndale went to him and explained the many things he

saw in the Scriptures that were contrary to papist doctrine and that had caused him his problems with the local clergy and the bishop, for he wasn't afraid to open his heart to this man. Whereupon

the doctor said to him, "Don't you know that the pope is the very Antichrist that the Scriptures speak about? But be careful of what you say, for if anyone finds out that you are of that opinion, it

will cost you your life.”

Not long after, Tyndale disputed with a certain theologian about the truth of the Scriptures until the man cried out in frustration these blasphemous words, “We would be better without God’s laws than without the pope.”

When Tyndale heard this, his godly zeal burst forth and he replied, “I defy the pope, and all his laws! If God spares my life, it will not be many years before I will cause every boy who works on a farm plowing fields to know more of the Scriptures than the pope does!”

As time passed, the priests increasingly railed against Tyndale and accused him of many things, saying that he was a heretic.

Tactic #4:

LABEL the individual as a “heretic” (Other labels: crazy, mentally disturbed, out of their mind). By placing a label on the individual, clergy is attempting to dehumanize him so that dismissing him or his opinions is much easier. Choosing not to address someone individually who challenges the toxic faith places a blanket negative label on all who would agree with that person. Those who disagree with what is taught are labeled as “detractors,” “malcontents” and “traitors”, who would destroy the ministry or organization. These labels then become rallying points under which other followers can be moved to action to hurt the individual. Once the label has been placed, it becomes more difficult to see the person as a human with real needs and the potential for good judgment. This is why church leaders today still use labeling against those that disagree or expose abuses within their institutions.

Labeling has become a ‘norm’ in today’s society and is used especially toward women that dare to speak out about abuse or, step outside the ‘roles’ that men have forced them into.

The pressure of the attacks became so great that Tyndale went to Master Welch and said that he desired to leave his employ and go to another place. “I am certain,” he said, “that I won’t be allowed to stay here much longer, and that you won’t be able to keep me out of the hands of the clergy, even though

I know you would try. But only God knows what harm might come to you if you keep me here, and I would be sorry for that.” So Tyndale left with the blessing of Master Welch, and went to London and there preached for a while, as he had done in the country.

Tactic #5:

Make the harassment so bad that the person labeled as a heretic has to flee for safety. In the fundamentalist cult I came out of, abuse victims who spoke out about their abuses have had to literally move to another city to get away from the harassment of the clergy and church members. This tactic is used to silence a victim and cause him to live in fear of further harm if he continues to speak out.

Not long after arriving in London he thought about Cuthbert Tonsal, then bishop of London, and especially Erasmus’s note in his book in which he praised Tonsal for his learning. He felt that he would be quite happy if he could somehow work for Tonsal. Tyndale wrote a letter to the bishop and then went to see him, taking with him a copy of the oration of Isocartes, the Athenian orator and teacher, which he had translated out of Greek into English, but the bishop gave him various reasons why he had no work for him, and advised him to seek work elsewhere in London. Believing that God in His providence had shut this door for a reason, Tyndale then went to see Humphrey Mummuth, an alderman of London, and asked for

help. Mummuth took him into his home, where he lived for about a year. While he was there, Mummuth said, “Tyndale lived like a good priest, studying night and day, eating only plain meals and having but one beer with them, and wearing the simplest of clothing.”

During that year, Tyndale felt an increasing urge to translate the New Testament from Latin into a plainer language. But as he saw how the preachers boasted about themselves and claimed total authority in spiritual matters, and how vain the bishops were in everything they did [many clergy act this same way even today], and how much he was disliked by them all, he realized that there was no place he could do it in London or England. Soon God provided

him sufficient money through Mummuth and some other men so he could leave England and go to Germany, where Martin Luther had just finished translating the New Testament into German (1521), and was working on many tracts and catechisms and a translation of the entire Bible.

[Click for more....](#)

** **
Exact start date of Women's Revolution is May 9, 1960. On that date, FDA approved first birth control pill.

** **
Women finally gained reliable control of reproduction. They could decide if and when they would have children.

Women had a new freedom making them equal to or better than men.

In 1960, there were 2 women members of U.S. Senate. There are now 21 women Senators.

Obviously the Pill did not directly cause this increase. But, it gave women independence to achieve.

** **
It is now 57 years since the "Pill" was available. Let me reflect on the impact, by taking a brief look at how it affected me, as a man.

My first wife and I graduated from college in 1969. She wanted to pursue a career in journalism and relied on the birth control pill to prevent pregnancy.

While my career was mediocre. My wife soared.

She started at a small radio station and quickly moved up to a TV news editor at a major network. At age 30, she decided to have a child and stopped taking the "Pill".

Our family lived in a large home near excellent schools. With our two incomes (her's was much larger) we enjoyed a good life.

This brief story has been repeated in millions of families.

Where is Women's Revolution headed?

Cannot predict future, but I will comment on recent events.

There have been several recent allegations against prominent men sexually harrassing women.

These charges are no longer ignored. Many of the men have been fired.

This is part of the Women's Revolution.

Women now hold important positions and are gaining more respect.

Women are Equal and Better.

** **
Written By :
Dennis Wilmeth

“Model minority” myth hides the economic realities of many Asian Americans

May is Asian Pacific American Heritage Month, a time to celebrate the collective identity and diversity of Asian Americans and Pacific Islanders (AAPI). Over the next month, Urban researchers explore data that shed light on challenges faced by distinct AAPI groups and how these groups strengthen their communities. Other posts in this series:

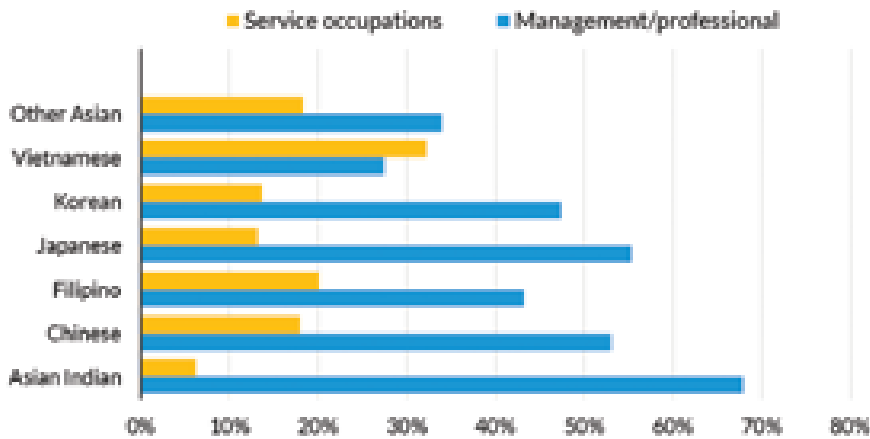
- [“Invisibility is an unnatural disaster”: Why funding the 2020 Census matters for Pacific Islanders](#)
- [Many South Asians lack local resources to withstand rise in hate crimes](#)
- [Asian Americans and Pacific Islanders, a missing minority in criminal justice data](#)
- [Asian American seniors are often left out of the national conversation on poverty](#)
- [Why don't more eligible Asian Americans benefit from the earned income tax credit?](#)

Asian Americans have been referred to as a “model minority” based, in part, on easily available statistics. The median education level of Asian Americans, for example, is higher than that of non-Asian Americans, and their average unemployment rates are lower. But these general measures mask large differences in the economic situation of Asians in the United States.

The variation within the Asian population is often overlooked because disaggregated data, or data that include information on individual countries of origin, is difficult to come by. When data are based on samples of the population, information on sub-groups such as Asian Indian, Vietnamese, Korean, or Japanese might not be available. Fortunately, some studies allow us to look at frequently hidden differences in economic and social position within the Asian American community.

Labor market positions vary greatly [among different Asian subgroups](#). For example, three-quarters of Asian Indians have at least a bachelor’s degree and over two-thirds are in management or professional jobs, but Vietnamese are less well positioned. One-fifth of Vietnamese Americans have less than a high school diploma, and similar numbers are in low-paying personal care and service jobs.

Labor Force Characteristics of Asian Americans



Source: Mary Dorinda Allard, “Asians in the U.S. labor force: profile of a diverse population,” *Monthly Labor Review*, 2011.

URBAN INSTITUTE

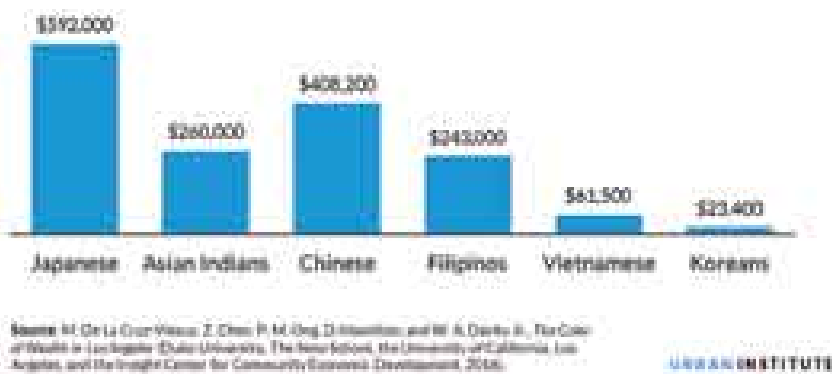
And while unemployment rates for all Asian groups are lower than rates for non-Asians, once they lose their jobs, Chinese and Filipino Americans are about 25 percent more likely to be unemployed for at least six months than other Asian and non-Asian groups.

The financial position of Asian Americans varies

On another measure of economic well-being, financial security and wealth, a [recent report](#) reveals significant disparity among Asian Americans in the Los Angeles area. Because the concentration of Asians in this area is higher than the national average, their economic position can provide insights into wealth variation across the different groups.

In comparison with a median net worth of \$355,000 for white households in Los Angeles, three Asian subgroups—Japanese, Asian Indians, and Chinese—had higher median net worth, while three others—Filipinos, Vietnamese, and Koreans—had much lower net worth. That represents an enormous gap of 25 to 1 within the Asian community.

Median Net Worth among Asian Groups in Los Angeles, 2014

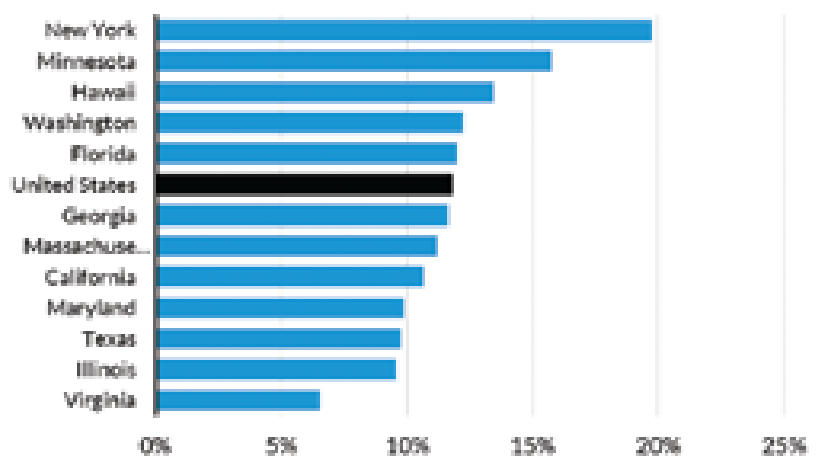


Asian American children also face diverse challenges

The economic position of Asian children varies substantially across the country. The Asian child poverty rate varies among states with a sizeable Asian population—rising above the national Asian child poverty rate of 12 percent in Minnesota and New York, for example, while falling below the national rate in Illinois and Virginia, according to the [Urban Institute's Children of Immigrants data tool](#).

Some of these differences are related to the different concentrations of Asian subgroups. In Minnesota, the poverty rate for children of Southeast Asian parents is 25 percent, compared with 4 percent for children of East Asian and the Pacific parents. Similar but smaller differences exist between these groups in other states.

Percent of Asian Children in Families with Incomes below the Poverty Level, 2014



Many Asian children do well in school, often despite economic and social adversity, but their childhoods are not always pleasant. [A study](#) looking at Asian American and Pacific Islander boys and young men in California reports that many found the school climate unwelcoming, and Southeast Asian and Pacific Islanders were routinely profiled by police and national security personnel.

Even the most successful [Asian Americans](#) have faced barriers to upward mobility in corporate America. A 2011 Leadership Education for Asian Pacifics (LEAP) study finds that Asians are far less likely to work their way up to CEO and board positions in private corporations. Although they were 6 percent of the population and 6.5 percent of the labor force in 2011, Asians held only 2.4 percent of the total board seats in Fortune 500 companies; only 18 Asian Pacific Americans held CEO positions.

[A more recent report](#) shows only slow progress in recent years. While the number of Asians on Fortune 500 boards increased between 2012 and 2016 (from 2.1 to 3.1 percent), they are still one-half of their representation in the overall population.

While Asian Americans, on average, fare well on measures of education and employment, a closer look reveals great diversity by ethnicity, immigration status, and geographic area—as well as barriers to economic success. The “model minority” stereotype papers over these differences and hides the challenges many Asian Americans face. ■

x x x x x x

To Know More....

Info About Article: <https://www.urban.org/urban-wire/model-minority-myth-hides-economic-realities-many-asian-americans>



Inspired by Personal Connection to Kidney Disease, Local Designer Launches Bracelet Collection to Benefit NKF Serving Maryland and Delaware

Handcrafted “Knock Out Kidney Disease” Collection combines beads and charms

New Vintage by Sam – a Baltimore-based accessory and apparel brand – has “returned to the ring” with a powerful combination of style and philanthropy.

Fusing vintage, art and modern design, the company has recently launched its second **Knock Out Kidney Disease (KOKD)** collection of bracelets with “purpose-filled” trinkets to benefit the **National Kidney Foundation Serving Maryland and Delaware**.

“Kidney disease is a year-round devastating epidemic that impacts 30 million people every day - including 1 in 9 Marylanders and 2,175 Delawareans on dialysis,” - said **Pattie Dash**, executive director of the National Kidney Foundation Serving Maryland and Delaware. “We are so appreciative of the KOKD collection for spotlighting kidney health awareness in an artistic way.”

Designed and handcrafted locally, the collection mixes the **Foundation’s signature orange color with metal bits, natural agate, quartzite, hematite and crystal detail** “to help shine light on kidney health awareness.”

“These bracelets are two gifts in one for just in time for the holidays and the perfect color combination for any **Baltimore Orioles** fan,” Dash added. “It’s a beautiful keepsake for your loved one and the purchase benefits the patients we serve who are living with kidney disease.”

Each special trinket possesses its own unique design – staying true to the New Vintage by Sam culture of individuality, while each complementary combination of beads and charms has its own meaning and healing properties consistent with the theme of holistic well-being.

Four designs are available in three different bead sizes: **itty bitty** (6mm) for \$20, **midi bitty** (8mm) for \$25, and **midi** (10mm) for \$30. All products are packaged in a linen dust bag with a special thank you from the line’s creator, **Sam Smith**.

“Each bracelet in the KOKD collection is simple, yet so intricate and detailed with various materials, personality accents and healing minerals to encourage peace and love energy

while telling a colorful story,” Smith said. “It is a privilege to create this conscious collection of trinkets geared to helping spread awareness about kidney disease.”

A “mompreneur” and fashion artisan from Randallstown, Smith aims “to utilize her creativity to leave a lasting impression on her community and individuals alike.”

Introduced to fashion and design at an early age, Smith taught herself how to draw and create wearable art. In high school, she participated in several local fashion shows and productions as both a designer and model.

While attending **Morgan State University**, Smith continued to hone her design skills while pursuing a **degree in Health Education**. Shortly after graduating in 2007, she created New Vintage by Sam.

“My brand is a true reflection of me: quirky, fun, colorful, tastefully rebellious, always fabulous and designed with love,” she explained.

Smith strives to align her artistry with philanthropy. This particular cause is personal as her father has diabetes – a condition that often leads to kidney disease – and her grandmother had kidney failure.

“I’m predisposed to kidney disease and want to do my part in spreading the word that others could be at risk,” she said.

With that in mind, **20 percent of the proceeds from each KOKD sale will be donated to the Foundation**. The collection is currently available online at <http://www.newvintagebysam.com/product/kokd-collection> and www.kidneymd.org

Customers also can find the collection at such retailers as: **For Rent Shoes, Fashion Spa House BWI location, Luxberg Jewelry & Art Gallery, Studio 7 the Salon, Sky Lounge Skincare, Keeper’s Vintage, Fia’s Fabulous Finds, SASS Salon**, and coming soon, **Versacchi Salon**. Additionally, the **Spice Suite in Washington, D.C.** will feature New Vintage by Sam **every third Saturday in 2018**, and Smith will bring the collection to various art shows and festivals. ■

About NKF-MD

The National Kidney Foundation (NKF) is the largest, most comprehensive and longstanding organization dedicated to the awareness, prevention and treatment of kidney disease. For more information, visit www.kidneymd.org.

Be social with us



BLOODY



CALL TO ACTION

To reduce lethality from domestic violence occurrences; its impact on unborn children, victims and families; and propel the need for a Domestic Violence Batterers Registry.

THE PRESIDENT'S

Gala





Native Americans deserve more attention in the police violence conversation

On Wednesday, November 8, in northern Wisconsin, 14-year-old Jason Pero was killed by officers from the Ashland County Sheriff's Office responding to a call that someone on the streets had a knife. As with many officer-involved shootings, the incident sparked questions, including why the officers used lethal force for a boy with a knife.

The issue of officer-involved shootings has entered mainstream discourse, but it has focused on the African American population, largely because of the #BlackLivesMatter movement. But Native Americans suffer from police violence at an equal or even higher rate. Pero was a member of the Bad River Chippewa tribe, and the shooting occurred on the Bad River reservation. The Pero case was the latest of at least 19 Native Americans [shot or tasered by police](#) in 2017. But these incidents rarely make it into headlines.

We must pay attention to police violence against this neglected community and not just during [Native American Heritage Month](#).

A lack of reliable data

We don't know how many Native Americans are subject to police violence, mainly because there is little information available about police violence in general. We don't even know how many people die at the hands of law enforcement.

Official data on police violence are available from the Centers for Disease Control and Prevention and from the Federal Bureau of Investigation, but these sources [undercount](#) fatal encounters among all racial and ethnic groups. This leaves the full scope of the problem's size and prevalence unknown. Even with data collection issues, these sources show that Native Americans are killed at a higher rate than any other racial or ethnic group.

In response to the lack of reliable data, several newspapers, including [the Washington Post](#) and [the Guardian](#), began collecting their own data on the number of officer-involved shootings beginning in 2015. In 2016, Native Americans had the highest prevalence of fatal encounters with the police out of any racial or ethnic group.

Between 2015 and 2016, the number of fatal encounters for African Americans dropped from 307 to 266, while the number of fatal encounters for Native Americans rose from 13 to 24. From January to October 2017, 22 Native Americans and 281 African Americans were killed in encounters with police.

Potential factors at play

The largest database, in years covered and completeness of count, comes from [Fatal Encounters](#), a website started by Brian Burghart, formerly of the Reno News & Review. The site collects fatal encounters dating back to January 2000. Using this database, we can compare the characteristics of Native American victims with all victims of police violence.

Fatal Encounters with Police, Native Americans versus All Victims, 2000-17

	Native Americans	All victims
Gender		
Female	13.4%	9.3%
Male	86.6%	90.7%
Context		
Substance use	9.3%	5.6%
Mental illness	10.4%	12.3%
Means of death		
Gunshot	76.7%	70.6%
Tasered	3.5%	3.4%
Vehicle	16.8%	20.1%
Choked	0.5%	1.0%
Beaten	1.5%	0.7%

Source: FatalEncounters.org

When taking the context of the police encounter into consideration, Native American fatalities tend to align with those of all victims, with the exception of substance use. Excessive alcohol consumption has a greater health [impact](#) on Native Americans than on any other racial group, which could be a factor in fatal police encounters.

Jurisdictional issues and the dynamics between tribal police and state and local law enforcement are also likely to contribute to Native Americans facing a higher risk of fatal encounters with the police. Although most reservations have their own tribal police departments, they are also policed by state and local agencies. In fact, tribal policing is only a recent phenomenon, with the passage of the Indian Self-Determination and Education Assistance Act of 1975, which established criminal justice responsibilities among the tribes. But Public Law 83-280 (PL-280) enables law enforcement agencies in certain states, instead of federal authorities or the tribes, to enforce criminal law.

Wisconsin, where Jason Pero was killed, is a PL-280 state. The officers who responded to the call were not part of the tribal police department. The outcome might have been different had the situation been handled by a tribal authority. ■

x x x x x x

To Know More....

Info About Article: <https://www.urban.org/urban-wire/native-americans-deserve-more-attention-police-violence-conversation>



Five reasons a robust decennial census benefits all Americans

The past year has brought a flurry of news stories about the 2020 decennial census that reflect uncertainty about its success. Stories suggest several concerns, including [persistent underfunding](#), the director's unexpected [resignation](#), challenges implementing [technological innovations](#) under budget constraints, and the potential appointment of a [controversial leader](#).

This year and the next are critical for the planning and success of the decennial census, as field operations gear up nationwide for an effort so large that it increases the country's [labor force participation](#) every decade. Recent events-including funding shortfalls, schedule delays, cancellation of key tests, and methodological concerns-have caused many to worry about the 2020 census, including the [commerce secretary](#) and the Government Accountability Office, which added the census to its "High Risk List" of government-wide programs in jeopardy.

The lack of appreciation for the importance of a robust and well-executed decennial census is also troubling. [Declining response rates](#) are one of the major drivers of escalating costs for conducting the decennial census. While some people are legitimately [hard to count](#)-because they live in remote areas, are transitory, or have language barriers, for example-others do not complete the questionnaire. If we all had a deeper appreciation for the census, it might face fewer challenges. Here are five reasons a well-funded, robust, and apolitical decennial census is an important American asset, not just for researchers, but for all Americans.

1. It is a foundational tenet of our democracy.

The [decennial census is mandated](#) in article 1, section 2 of the US Constitution to ensure that "Representatives and direct Taxes shall be apportioned among the several States which may be included within this Union, according to their respective Numbers." The founders of our country knew that a fair democracy was based on an accurate population count.

The decennial census is one of our country's longest-standing legacies. It has been conducted every 10 years since 1790, and the rigor of its data has been a cornerstone for fair representation throughout the nation's history.

2. It determines how to allocate spending for many federally funded programs.

In 2015, [states received nearly \\$590 billion](#) from 16 large federally funded programs, the allocation of which was determined by 2010 census counts. Programs covering health (Medicaid), infrastructure (Highway Planning and Construction), education (Head Start), and food security (National School Lunch Program) were among the allocations.

Research shows that certain groups-including [people of color](#), [renters](#), and young children-are more likely to be undercounted. Residents of every state have a vested interest in ensuring that their counts, including those typically undercounted, are as accurate as possible to receive a fair allocation of federal resources and to [ensure civil rights](#).

3. It determines legislative districts and ensures accurate representation in Congress.

The decennial census is the [basis for political redistricting](#) and the apportionment of representatives across the 50 states. It also helps jurisdictions [comply with the Voting Rights Act](#), which ensures that all voters have access to language assistance, if needed, when they cast votes in an election. Data collected in the decennial census ensure that democratic representation is fairly allocated.

4. It is the foundation for important data products and projections for the rest of the decade.

Census counts are the [base population for national and state population projections](#), which are created for years between decennial censuses. Such projections constitute our country's official population counts. Census counts are a key component of the [weighting process for the American Community Survey](#) (ACS) and ensure that those who participate in the survey adequately represent the American public. A rigorous decennial census matters for the total count of the population in 2020 and the accuracy of the data for the following decade, too.

5. It is a key information source for all groups and stakeholders.

Although only [legislatively mandated questions](#) are included on the decennial census (and ACS), the data collected are crucial not only for research institutions, but also for the business community, state and local governments, and historians and archivists. For example, commercial databases benchmark to population counts from the decennial census. Such data are then used by the business community to make better strategy, marketing, and development decisions. Without accurate census counts, decisionmakers would be hamstrung in their planning and development.

In our democracy, there are various ways to show up and be counted. When we cast a ballot in an election, our choice of leadership is counted. When we engage with leadership and political institutions, our voices and opinions are heard. When we complete our decennial census-whether by mail, online, or with an enumerator at our door-who we are is counted.

Demographics and our place of residence are the facts that undergird an accurate representation of our country and a fair allocation of resources. In an era when facts data are threatened, maintaining the integrity of decennial census should be front of mind for all Americans. ■

Info About Article: <https://www.urban.org/urban-wire/five-reasons-robust-decennial-census-benefits-all-americans>

STOP DOMESTIC VIOLENCE

DOMESTIC
VIOLENCE

Domestic Violence and Intimate Partner Abuse is a debilitating scourge on our communities. Often, victims are shrouded in cloaks of shame and further abuse, alienation, and harsh judgments. In an attempt to bring awareness to these anecdotes of shame. Throughout the year, Focus on Women Magazine will feature a series of testimonies--- Quilted Voices, Healing Voices. Join us as we shed light on this toxic, noxious, social malady. We ask our readers to feel free to contribute to our tapestry of stories.

All the best,

Joslyn Wolfe

Publisher, Focus on Women Magazine

Focus on Women Magazine

A bi-monthly publication for women, to women, and about women which focuses on topics of interest to women and is geared towards a multi-generational audience.

EASY WAYS TO SUBSCRIBE

Focus on Women Magazine is the most relevant, engaging and interesting magazine to hit the newsstands. They understand women's lives and their need to balance caring for a family, succeeding in the highly competitive business world and offering up their strengths to make a difference through nonprofits or community organizations.

Submit Article for FREE !!!
in Magazine or Website

F: 410-294-2932,
P: 410-630-1224
M: 410-294-2932

Free Review of Online Article and
Latest Magazine Issue

eMail at:
nicbri@focusonwomenmagazine.net
info@focusonwomenmagazine.com

website submit form at
<http://www.focusonwomenmagazine.com/subscription.html>



January/February - 2018

All fields are important, Pls fill in the details :

Name(Mr/Mrs): _____

Address: _____

Contact Number: _____

Email ID: _____



Angela's Story...

I'm an attorney. I am a mother. I am a member of the Maryland House of Delegates for District 25, and I'm a survivor of domestic violence and domestic abuse. I think that domestic violence can occur where there is no actual physical contact and domestic violence. A lot of women don't realize that they are in a domestic violence situation because the physical incident hasn't happened.

I've been in two relationships where I experienced Domestic Violence that escalated to domestic abuse. I was having a conversation with a friend of mine about a relationship I was in, saying, "Well, I don't know if it was really domestic violence because he didn't hit me. he broke things. He got angry. He threw keys at me. It wasn't until he literally picked me up and threw me off of the bed because he was angry over something I had said, did I realize that something was not right. My girlfriend said, "Angela, that's violence. When he finally became physical with you, that wasn't the first incidence of violence. The first incident of violence was when he threw keys at you, when he busted the wall behind you because he was angry, that's violence."

I remember one of my lowest points was after the actual physical incident. I was stranded. We were in another state at his friend's house. The house was empty and he left. I literally didn't even know where I was so that I could inform the police about my location. I didn't know where my children were. I had maybe a cellphone and the battery was fading. I didn't have my purse, wallet, ID, credit cards, or any money. I remember being in this empty apartment and just at my wits end. In my head, I was an accomplished woman, an attorney. I knew a lot of what I thought were important people, yet I was stranded, battered, and alone in this room. I remember being angry with God at the moment. I questioned, "Why would you let this happen to me?" My spirit spoke so clearly to me, "This isn't about you."

Knowing what I know, I found myself in the second Domestic Violence situation. There was one special person who very intentionally asked me, "Sis, are You okay?" That meant so much to me.

I now understand why I had to go through what I had to go through. I'm thankful for the strength I can draw. I'm thankful for the realness that I can share with women and know where they are and tell them, "you're going to be okay, and you're going to get out of this."

**Would you like to lose weight and
do you have high cholesterol?**



**Has a doctor ever said that you have
a condition call “fatty liver”?**

Join a Nutrition Study for
Weight Loss and Metabolism

A no cost 16-week research program will provide you with information and tools designed to change eating habits, help people lose weight, and improve health.

We are testing whether diet changes can naturally increase metabolism, aid in weight loss, and help you reduce fat.

Qualified participants will receive at no cost, study-related:

- Weekly nutrition education classes
- One-on-one consultation with a registered dietitian
- Resting and post-meal metabolic rate and body composition testing

Interested? Please call 855-STUDY-18 today!

Find out more at www.PhysiciansCommittee.org/study

CONDUCTED BY

PhysiciansCommittee
for Responsible Medicine

5100 Wisconsin, Ave NW, Suite 400, Washington, D.C. 20016

Can we make the fear and hatred stop?



I am at a loss for words powerful enough to speak to the horror of the [violence and loss of life in Charlottesville, Virginia](#), over the weekend. But it was not just this weekend, and it was not just the violence, that was chilling.

To me, the worst moment wasn't the thrown bodies and flying shoes from a car plowing through a crowd, horrid as it was. Images of Friday's torch-lit rally were even more disturbing to me. I believe that most Americans view Nazi flags and marchers with fire in their hands and hoods on their heads with revulsion, sorrow, and anger. But for people of color, Jews, Muslims, immigrants, and others, these images bring a special pain and justifiable fear for themselves and their families. Terrorism is intended to terrorize. For that pain, I am so sorry.

I also am sorry that I wasn't searching for words for so many earlier acts of intimidation. For many months, white supremacists, Nazis, and radicals have zeroed in on Charlottesville with [a concerted campaign of intimidation and terror](#), causing great harm to those they aim to frighten. Their activism is a more visible expression of the racism and hatred that has marked our country since before its founding, has been reignited and allowed to flourish in today's [divisive political climate](#), and leaves its mark not only in psyches but in shrunken opportunities and barriers to a better life.

I realize that offers of support and solidarity won't keep people safe or help them heal. Individually and together, we must find ways to stand with Charlottesville and with those in our own communities for whom these experiences are excruciating and terrifying. But we also need to find ways to help make the hatred stop.

At the Urban Institute, we can do more to use the tools at our disposal—our [research knowledge](#) and our history in addressing instability, volatility, uncertainty, and fear across lines of income, class, place, and race—and offer insight to help inform solutions.

We should do more to shed light on [what empowers hatred](#), the [structures that perpetuate division](#), and the consequences of fear and intimidation. Witnessing and experiencing violence is traumatic, and we know that trauma can have [lasting effects on health and well-being](#).

Indeed, we must continue to examine and point out where the legacy and fact of [racism still exists](#). Our [cities](#) and [schools are still segregated](#). Indifference and damaging policies have contributed [to lagging wealth among minority families](#). Communities of color are still greatly [overrepresented in the criminal justice system](#). And [whites often do not recognize the privilege](#) our society still provides to us. In short, we need to name racism and examine where the legacy and fact of racism stills exists, even in our own lives and work.

But there is something more I wish to understand. I am struck that marchers in Charlottesville chanted “you [or sometimes Jews] will not replace us” and spoke of their “heritage” or “culture” being destroyed. The idea of replacement is powerful in [far-right, European, anti-immigrant movements](#), too. I believe that inclusion, which should allow for the preservation of the nonviolent, nonthreatening parts of everyone's culture and heritage, is at the heart of the American experiment. But we have always struggled with the fear of replacement. And it resonates with many who would never condone the hatred exhibited in Charlottesville.

Maybe I should not seek to explicate the simply intolerable. I applaud those who shine a bright light on and combat directly those with invidious beliefs. But leading a community of analysts who seek to bring forth knowledge to improve lives, I imagine we have something to contribute, to understand the origins of fear and what drives hatred of the other, even as we seek to protect and create opportunity for its victims. We can ask why do people experience change and disruption as coming at the hand of the other, and what can we do to create and demonstrate the mutual benefit of an inclusive society. Without this inquiry, how else can we tear out hatred, root and branch?

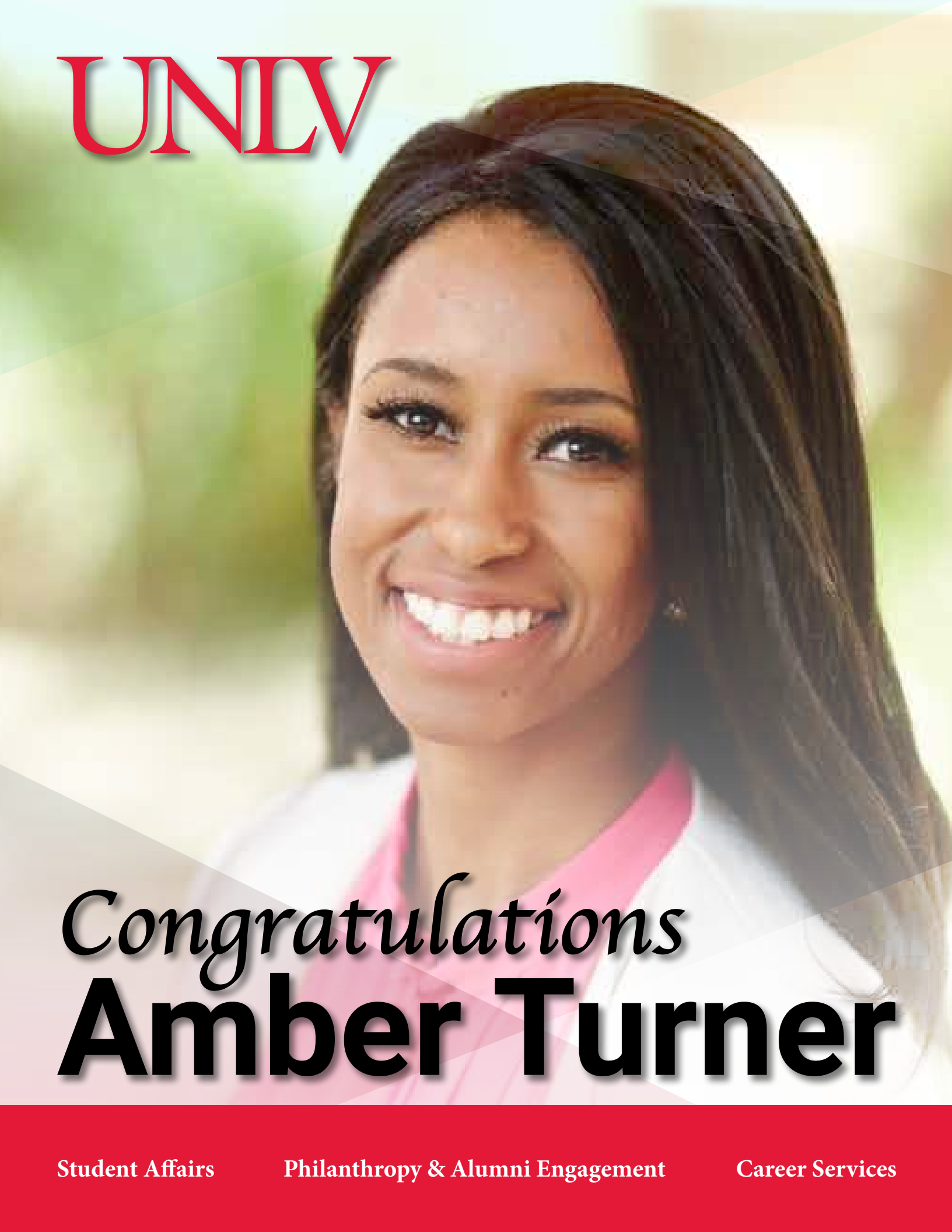
The Urban Institute's mission is to offer insights from evidence to find answers to the great challenges. Today I offer no evidence-only my own reflections. What happened in Charlottesville has motivated us to come together and be clear that, even as independent finders of fact, we won't stand for hatred. But I think we can do more both to confront racism in all the forms that still bedevil us and explore the origins of that hatred. ■

x x x x x x

To Know More....

Info About Article: <https://www.urban.org/urban-wire/can-we-make-fear-and-hatred-stop>

UNLV

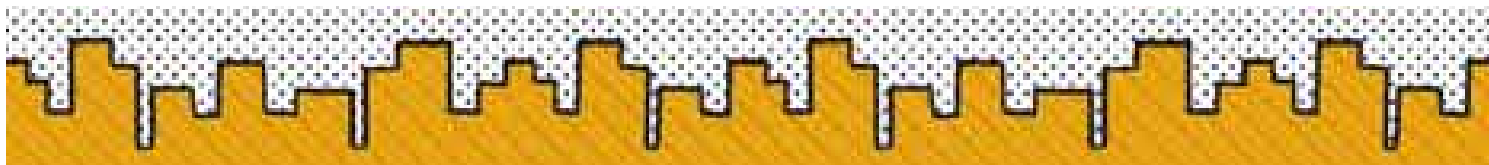
A portrait of Amber Turner, a young woman with long, dark, wavy hair, smiling warmly. She is wearing a white graduation gown with a pink sash. The background is a soft-focus outdoor setting with greenery and a building.

Congratulations
Amber Turner

Student Affairs

Philanthropy & Alumni Engagement

Career Services



BECOME AN OLNEY THEATRE CENTER MEMBER AND SAVE UP TO 45% OFF THE REGULAR TICKET PRICE — AND UP TO 35% OFF OUR SENIOR AND CHILD TICKET PRICES! PLUS, RECEIVE GREAT BENEFITS LIKE FREE TICKET EXCHANGE AND FREE MEMBER EVENTS.

TO ORDER YOUR MEMBERSHIP, PLEASE CALL THE BOX OFFICE AT 301-924-3400 BETWEEN 12:00PM AND 6:00PM WEDNESDAY - SUNDAY.

ANNIE

Nov 8, 2017 - Jan 7, 2018

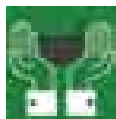


Book by Thomas Meehan • Music by Charles Strouse • Lyrics by Martin Charnin • Directed by Jason King Jones

From the director of last year's hit holiday musical, *Mary Poppins*, the sun will come out brightly during the holidays. *Annie* has been the gateway for millions of kids to develop a love... ➤

AUBERGINE

Feb 7 – Mar 4, 2018



By Julia Cho • Directed by Vincent M. Lancisi • Co-Produced with Everyman Theatre

Ray leaves his job as a classically trained French chef to take care of his dying father, a Korean immigrant, who never appreciated Ray's culinary accomplishments. Food, which normally ... ➤

EVERY BRILLIANT THING Feb 28 - Mar 25, 2018

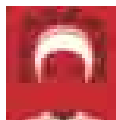


By Duncan MacMillan with Jonny Donahoe • Directed by Michael Dove

Could you name a hundred things that make life wonderful? A thousand? How about a million? A 7 year-old child confronted by his mother's attempted suicide makes a list of things to... ➤

THE CRUCIBLE

Apr 18 – May 20, 2018



By Arthur Miller • Directed by Eleanor Holdridge

Arthur Miller's classic 1953 play about the Salem witch trials spoke truth to power and lit a blazing candle against the "Red Scare" rather than cursing its darkness. 65 years later, it comes.. ➤

THE INVISIBLE HAND

May 9 – Jun 10, 2018



By Ayad Akhtar • Directed by Michael Bloom

From the Pulitzer Prize-winning playwright of *Disgraced* comes a thriller about Nick, an American options trader and Citibank executive, held hostage by a fringe radical group in Pakistan. ➤

ON THE TOWN

Jun 20 – Jul 22, 2018

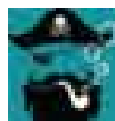


Music by Leonard Bernstein • Book and Lyrics by Betty Comden and Adolph Green • Based on an idea by Jerome Robbins • Directed by Jason Loewith • Choreographed by Tara Jeanne Vallee

Three young sailors on shore-leave hit 1944 New York City in a mad sprint to find love before being shipped off to war. Gabey sets off in search of a beauty he's only seen on a subway poster... ➤

THE PIRATES OF PENZANCE and H.M.S. PINAFORE

In rotating repertory July 11 – Aug 19, 2018



By W.S. Gilbert and Arthur Sullivan • Directed by Sean Graney • *The Pirates of Penzance* adapted by Sean Graney and Kevin O'Donnell • *H.M.S. Pinafore* adapted by Sean Graney, Andra Velis Simon, and Matt Kahler

They're back! Chicago's most innovative theatre company, The Hypocrites, returns with an encore engagement of their critically-acclaimed, immersive and streamlined version... ➤

Call our Sales Director, Weldon C. Brown, at 301.924.4485 ext. 121 for details about our Memberships.

Website Link : <http://www.olneytheatre.org/shows-a-events>

Using technology to improve women’s safety in Pakistan’s urban transit systems

This post has been edited from the original version published by the [Sexual Violence Research Initiative](#).



As cities around the world invest billions in new mass transit systems, people’s experiences and fears of victimization in public spaces cause gender disparities in accessibility. Gendered social norms regarding women’s traditional role in society and control over income further limits women’s access to mass transit systems.

Although fear of crime affects all transit users, sexual harassment and victimization is a larger concern for women and girls, and it restricts their mobility and hampers access to economic opportunity. As we learn more about this problem, we are looking for solutions, including technology, that can lower the risk of victimization and help women feel more safe on public transit.

How rampant is this problem?

Women around the world face sexual harassment and violence in many forms. In addition to more widely discussed issues of intimate partner violence and workplace harassment highlighted by the #MeToo movement, women also feel unsafe and are sexually harassed in public spaces.

Global surveys show that even in industrialized countries, women report feeling considerably less safe than men walking alone at night in their communities. The situation is worse in developing countries, where the majority of urban women in India (79 percent), Thailand (85 percent), and Brazil (89 percent) report being victims of harassment or violence in public. Pakistani cities are no exception, where a 2014 study found that 78 percent of women in Karachi have “experienced sexual harassment or felt harassed or uncomfortable.”

Thousands of women in cities around the world may stay home for fear of victimization, perpetuating prevalent social norms and further restricting their mobility. Despite efforts to develop gender-sensitive transport planning and operations, many cities are failing to address women’s unique transport requirements.

How do women use transit differently than men?

Despite the pervasiveness of this problem, the literature offers few insights into the stages of women’s and men’s transit journeys where physical or social circumstances make them most fearful of experiencing harassment or violence.

To bridge this gap, the Urban Institute and the [Information Technology University Punjab](#) formed a partnership to map hot spots where transport users have experienced violence or harassment or felt unsafe in Lahore, Pakistan. Following the [whole-journey approach](#), we are using a custom-built smartphone application to explore how variations in transport operations, vehicle facilities, transit station design, and urban land-use affect citizens' perceptions of safety from their doorsteps to their destinations and back.

In preparation for [more detailed fieldwork](#), we observed and documented users' experiences in approaching transport systems from home, including walking, waiting at curbsides and designated bus stops, boarding and alighting various public transport vehicles, and interacting with fellow passengers and transit agency staff during ticketing, queueing, and riding. Our team spent hundreds of hours on 12 multimodal routes. We aimed to cover all geographies of Lahore during morning, afternoon, and evening hours. We also interviewed transit planners, government officials, drivers, conductors, and security staff, and we conducted focus group discussions with female passengers.

What have we found so far?

While preliminary, the following insights emerge from our initial research:

The extent and form of this problem is not fully recognized and is seldom discussed in public forums, likely because of social taboos associated with sexual harassment. Because most women do not react to or report verbal or sexual harassment, transit agencies' official complaint data leads to the incorrect conclusion that Lahore does not have a harassment problem. Women are potentially [unaware of their rights](#) under local laws, are unaware of the existence of complaint mechanisms, minimize acts of sexual harassment, blame themselves, fear retaliation by perpetrators, or simply do not believe that reporting will trigger any response from law enforcement.

Of the transit agency staff that were interviewed, all the male drivers and some female security staff had little or no knowledge of what constitutes sexual harassment or of gender-sensitive responses to incidents of sexual harassment or violence should they be reported. There is also no visible signage making riders aware of the penalties for perpetrating harassment or violence.

Despite major public investments in overhauling Lahore's transport system, lack of interoperability between transport options, poor information on and adherence to schedules on traditional routes, and unmarked pickup and drop-off locations increase women's vulnerability.

How can we best provide evidence-based policy recommendations?

Through engagements with stakeholders in the Punjab provincial government's various departments, we have a captive policy audience eager to learn and apply lessons. Three government agencies have jointly launched the [Women Safety Smartphone Application](#), providing users information on women's protections against harassment in public spaces under local laws and allowing them to report complaints.

We plan to create an interactive map of the city identifying harassment hot spots, such as unlit pedestrian bridges and their consistent physical features, such as overcrowding. Accompanied by passengers' safety perception scores of these and other places, the tool will offer decisionmakers descriptions and photographs of problematic areas and suggestions for low-cost improvements.

In future phases of research, we hope to undertake rigorous impact evaluations of the most promising interventions emerging from Lahore's revitalized transit system. For example, we could assess how women's fear of harassment has been reduced (or otherwise) because of the paperless "smart" ticketing system that eliminates conductor-passenger or driver-passenger interactions. Similarly, with support from local authorities, we could undertake and evaluate the impact of information campaigns aimed at increasing male riders' and transit staff's awareness of the long-term psychological and social impacts of harassment on women and their families. ■

Curious Pakistani women watch a Delhi-Lahore passenger bus arriving at Wagah border post near Lahore, Pakistan, Friday, July 11, 2003. Photo by B.K. Bangash/AP.

X X X X X X

To Know More....

Info About Article: <https://www.urban.org/urban-wire/using-technology-improve-womens-safety-pakistan-urban-transit-systems>

A Change of Habit

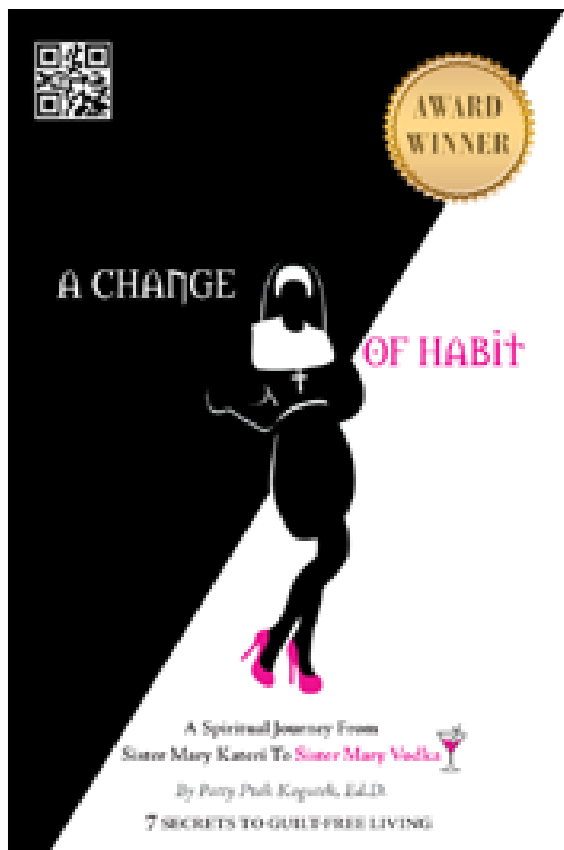
With eyes enviable of the bluest oceans, and gracefully grayed hair, Patty Kogutec is someone whose positivity stems from a past that was stifling and tethered.

“I always wanted to live for everyone else,” says Kogutec, formerly known as Sister Mary Kateri, to now known as Sister Mary Vodka. Kogutec says it took her a number of unfulfilling years to arrive at her life’s purpose.

Speaking with an assuredness that belies her past, Kogutec recounts the things that made lasting impressions on her life. “Though I don’t like to talk about it, I lived seven years in a convent, as a nun,” she says. She added that she spent 12 years in a marriage long after it left her. “It took forty years, but I found my purpose and that was through writing the book, A Change of Habit that helped me teach others how to stop living through the expectations of others and to not allow religion to get into the way of our relationship with God”, she says.

In a tone of quiet determination and confident optimism, Kogutec adds that in order to find true happiness, we must be at a place with ourselves where we are free of guilt, and one that is fulfilling, allowing us to our sharing our gifts with others.

Patty Kogutec is the author of “A Change of Habit: A Spiritual Journey from Sister Mary Kateri to Sister Mary Vodka.



A Change of Habit: A Spiritual Journey from Sister Mary Kateri to Sister Mary Vodka

ISBN-10: 145254283X

ISBN-13: 978-1452542836

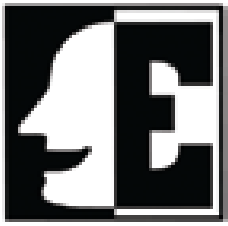
Publisher: Balboa Press (8 December 2011)



Patty Ptak Kogutec (author)

Doctorate degree in Educational Administration from University of Southern California

<http://pattykogutec.com/>



EVERYMAN THEATRE

ENGAGE. INSPIRE. TRANSFORM.

EVENTS

Enhance your visit to Everyman with one of our signature events. Share your thoughts during discussions surrounding our work, attend additional programs or mix and mingle at a pre-show cocktail hour.

Explore your passion with Everyman Education →

Explore our 2017/18 Season! →

BUY TICKETS NOW! →



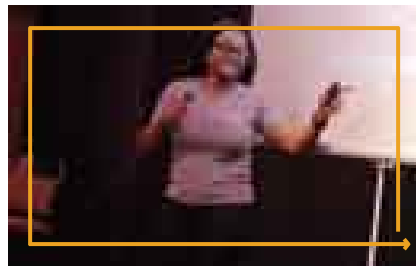
TASTE OF EVERYMAN

Taste of Everyman is an artful..... **\$60 includes both the event and tickets.** All tastings begin at **6:00 PM** with the show to follow at **7:30 PM.**



CAST CONVERSATIONS

Talk about the play with members.... **This event is free; to attend, purchase or exchange tickets into the fourth Thursday evening performance for each show.**



COMMUNITY EVENTS

Talking with members.... **BUY TICKETS**



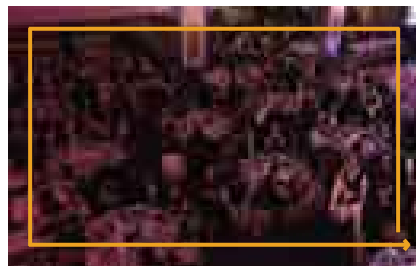
TNT: theatre night for teens

Ignite your passion for the world..... **Pay just \$10 for dinner, an artist meet-and-greet, show, post-show discussion and dessert. Pre-show activities begin at 6 PM.**



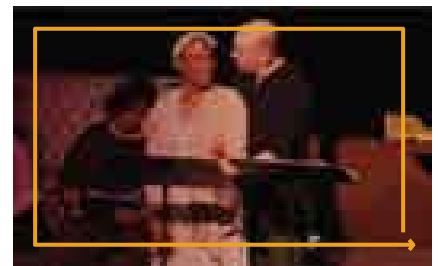
EVERYMAN AT THE PARKWAY

Everyman Theatre and the Maryland Film Festival (MdFF) are pleased to announce "Everyman at the Parkway," a season-long partnership..... **BUY TICKETS**



ANNUAL GALA

WINTER GALA AND MASKED BALL: A CELEBRATION HONORING SUSAN W. FLANIGAN..... **Saturday, January 20, 2018 | 6:00 PM-Midnight**
The Lord Baltimore Hotel



SALON SERIES: WOMEN'S VOICES

Warm up your winter with this series of dynamic play (with cocktails!).... **6PM Cocktail Hour (cash bar)**
7PM Reading, followed by post-show cocktails
BUY THE WHOLE SERIES

Founding Artistic Director : Vincent M. Lancisi
Managing Director : Jonathan K. Waller

315 West Fayette Street, Baltimore, MD 21201 | 410-752-2208
Copyright ©2018 Everyman Theatre

One in five families will lose resources under administration's proposed changes to safety net programs

The congressional budget resolution that paved the way for tax reform legislation assumes large budget cuts to programs that help low- and middle-income families. Additions to the deficit from tax reform and other programs also mean the federal budget will face increasing pressure over the next decade.

As Congress looks to curb spending, proposed changes to key income security programs and across-the-board reductions to discretionary spending outlined in the president's 2018 budget proposal could be the blueprint for federal spending cuts.

Budget proposals are generally expressed in terms of large aggregate numbers, but policymakers and the public need to understand what those proposals may mean for families.

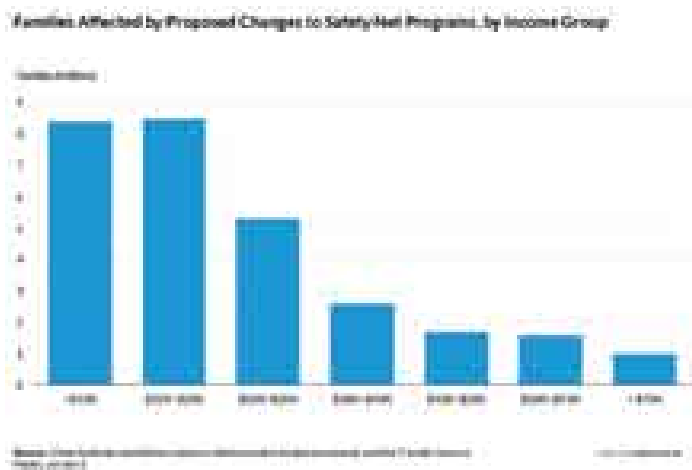
According to a new Urban Institute analysis, the proposed changes to federal safety net programs in the president's budget request would affect as many as 29.2 million families, or more than one in five, if all changes were fully implemented in 2018. In total, 72.3 million people would lose resources.

Approximately 80 percent of those families already make less than \$30,000 a year and would stand to lose \$1,230 a year, on average. Losses come from resources like food assistance, housing vouchers, assistance with heating bills, child care subsidies, and cash benefits for basic needs. More than 8 million of America's poorest families—those with incomes less than \$10,000 annually—would bear about 30 percent of the burden of the reduction in benefits.

"While our findings show that those earning less than \$10,000 are particularly vulnerable, the impact of cuts to millions of families into the \$30,000 income range is really striking," said Elaine Waxman, a senior fellow at Urban and a co-author of the report. "These are the working poor. We need to realize that these cuts could affect a lot of people who are participating in the economy."

For all families affected by the cuts, losing even a few hundred dollars in assistance could lead to difficult choices. Although the average loss in family resources is \$1,230 annually, approximately 2.9 million families are expected to lose at least \$2,500 annually, including 1.6 million families with children and 1 million families with a family member who has a disability or is elderly.

"One of the things we know about low-income families is that meeting their basic needs involves making trade-offs," Waxman said. "So you choose between housing and your food budget. We talk about people's resources as if they're in little buckets,



but that's not really how people live. People live in a series of trade-offs. When you squeeze one part, something else is going to go."

The administration's budget proposes changes to several programs that provide low-income families cash and in-kind assistance. Urban researchers modeled the effects of these proposed spending and policy changes and estimate that \$35.8 billion in assistance would be cut, with the neediest families losing the most.

These cuts come from the Supplemental Nutrition Assistance Program (SNAP), Temporary Assistance for Needy Families, the Low Income Home Energy Assistance Program (LIHEAP), Supplemental Security Income (SSI), and housing assistance. Although LIHEAP would be cut completely under the president's budget proposal, the other programs would face funding reductions and policy changes.

A strengthening economy may allow some affected families to increase their employment and earnings, buffering the impact of some of the changes. But at least one-third of the families affected contain at least one senior or person with a disability, meaning that many people affected are not among those participating in the workforce, which raises questions about short-term risks for vulnerable families.

The cuts may prove a particular burden to disabled people, who face greater barriers to work. A policy change to SSI means many families with more than one disabled family member would lose an average of \$3,030 annually, money they're unlikely to make up. ■

X X X X X X

To Know More....

Info About Article: <https://www.urban.org/urban-wire/one-five-families-will-lose-resources-under-administrations-proposed-changes-safety-net-programs>

*Come, be part of a story -- one that will not repel you,
but one that will compel you.*

A story that will repair, not despair.

A story that will help weave a tapestry of hope.

The women in Afghanistan face the unthinkable:

Imprisoned for being raped

Mutilated for leaving abusive spouses

In some cases set afire and abused by family or community members

Marginalized from the marketplace

Psychologically scarred from centuries of war

and being persecuted over centuries.

*Be part of the story -- to help these women
move towards a life of self sufficiency and hope.*

Support the Focus on Women Magazine Afghan Women's Craft Project.

Purchase their goods.

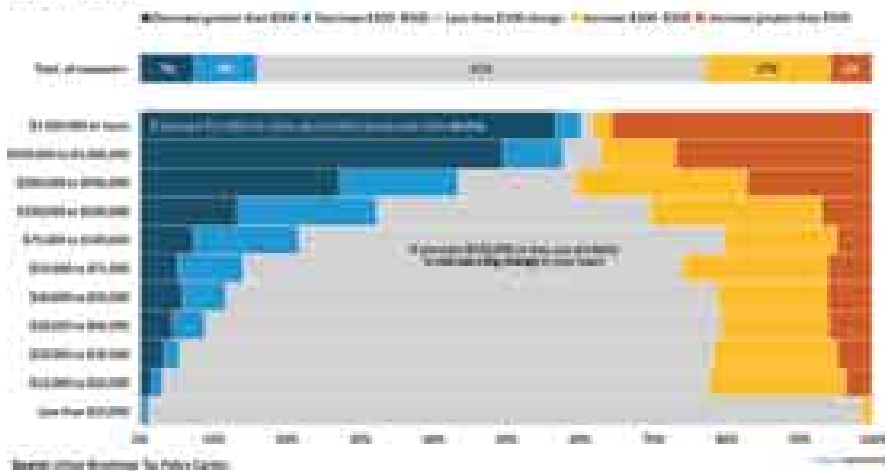
This is a Fair Trade Project



How We Can Better visualize Analysis of Tax Reform Legislation

Over the past couple weeks, we've seen table after table presenting estimates of the impact of the tax reform legislation Congress is debating. Although these tables are useful, they are less engaging on my Twitter feed than, say, a graph would be.

Distribution of Tax Returns by Size of Tax Change for the Senate Version of Tax Cuts and Jobs Act, 2027



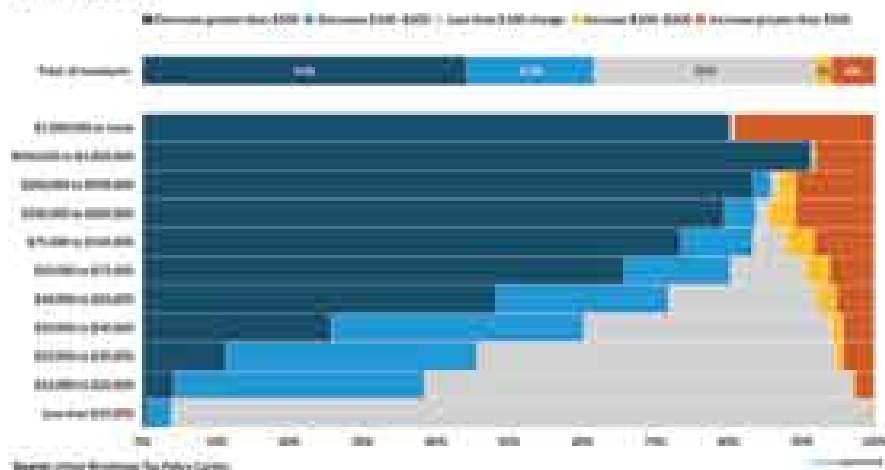
So when I saw [Michael Linden tweeted this table](#) from the Joint Committee on Taxation (JCT), I thought I'd turn it into a graph to help people more easily see the important information it contained. The table showed analysis of the Senate's version of the Tax Cuts and Jobs Act, not [the version](#) produced by the House and Senate conference committee, which is the final version under debate.

Many of my Twitter followers liked this graph, and it led to interesting discussions. Some discussions focused on policy questions (e.g., how to measure tax burdens, size of each group), but most others focused on the graph's merits. I'd like to focus on these latter questions because they illuminate the important policy questions in a unique way.

Why did I visualize the year 2027?

My initial response was that I simply remade the original table from the JCT, which I found on Twitter. But upon further analysis of the original JCT report, I noted how different some of the other years in the report looked. I later made graphs for all five years the JCT published, like 2019, shown below.

Distribution of Tax Returns by Size of Tax Change for the Senate Version of Tax Cuts and Jobs Act, 2019



2027 differs from the other years because the Senate bill sunsets all the individual income tax cuts while the corporate tax rate cuts and slower inflation indexing (an individual income tax increase) are permanent. Congress did this to satisfy Senate rules that prohibit deficit increases outside the 10-year budget window.

Congress is leaving it to future legislators to extend the individual tax reductions. This tactic—which both parties have used at times—creates uncertainty for individuals and businesses, and changes the incentives these different groups face.

Why didn't I scale the income brackets by size?

The short answer is that the table in the original tweet didn't have the bin sizes, and I wanted to make something and get it out the door. And although others scaled the brackets by size—including the [New York Times](#)—I'm not sold that this is a better approach because it obscures the results for the groups that have fewer tax units, namely those with very high and very low incomes.

Distribution of Tax Changes under the Senate Version of the Tax Cuts and Jobs Act



It may be the case that less than 1 percent of tax units have more than \$1 million of cash income, but I wanted to show that this group is also more likely to experience a tax cut than a tax increase. (I eventually did make something like this in Excel—a horizontal Marimekko chart—but I stopped short of publishing it for the reason above.)

Why show percentage with increases or decreases, rather than dollar amounts?

The JCT report did not estimate the dollar change in taxes for different income classes, only the percentage that would experience an increase or decrease within the groups shown in the graphs. That said, this is a valid critique. The dollar amounts are probably more meaningful. A tax cut of \$100 for someone earning \$10,000 is more in percentage terms than a cut of \$5,000 for someone earnings \$100,000. Further, readers will probably connect more with a graph that shows a rough estimate of their anticipated tax cut or increase than whether they are likely to be a “winner” or “loser.”

While JCT didn’t enable me to make these calculations, estimates from the Urban-Brookings Tax Policy Center (TPC) show that tax units at the bottom of the distribution are likely to see larger tax cuts in percentage terms than those at the top of the distribution.

Why do you trust the data?

Steve Wexler, a friend of mine in the data visualization field, raised this question, and my short answer (in a tweet) was that I used to work at the Congressional Budget Office (CBO) and knew many of the people at the JCT and trust their work. But it’s bigger than that. Wexler’s question made me think about what I see when reading estimates.

Let me start with this simple proposition: These numbers are not perfect forecasts (which don’t exist), but they are meaningful. There’s no way we’d make it to 2027 and find that the JCT’s estimates are spot on.

But we’re not asking the JCT to give us the truth from a crystal ball. We are asking for its best estimate of the truth given current information and what we can expect in the future.

The JCT is the official (tax) scorekeeper for Congress and, like CBO, is highly competent and scrupulously nonpartisan. The federal government invested taxpayer dollars to help design and implement models and estimates used to understand the economy and develop policy. Members of Congress on both sides of the aisle have alternatively praised and decried these and other agencies when their estimates agree or don’t agree with their policy proposals.

Trusted analysis is a vital check on federal policy and power

The JCT’s record also leads me to put faith in their numbers. In this case, the JCT’s estimates are in line with those of other independent organizations such as TPC and the Tax Foundation. These organizations are a check on federal agencies, so it’s vital to support and fund them.

As much as I respect the JCT’s work, I would appreciate more transparency with their models and data. I think CBO is better on this front because it publishes background and other papers about their models and budget estimates (full disclosure: in my nine years at CBO, my colleagues and I wrote several papers documenting the inner workings of the long-term Social Security model). The office also regularly evaluates the quality of its economic forecasts in publicly released reports.

I can’t tell you that numbers from the JCT, CBO, or similar agencies are correct. Similarly, I’m not going to tell you that football referees are going to get every call right. But the federal government named these agencies the official scorekeepers, or referees, of the budget and policy game for good reason. ■

X X X X X X

To Know More....

Info About Article: <https://www.urban.org/urban-wire/how-we-can-better-visualize-analysis-tax-reform-legislation>



Edith "Jackie" Ronne

I am so proud to accept this honor on behalf of my late mother, Jackie Ronne, known as "Antarctica's First Lady". She was the first American woman to set foot on the frozen southern continent. In addition, she was a true pioneer in Antarctic exploration by being a working member of the last true exploring expedition, wintering over on my father's Ronne Antarctic Research Expedition (1946 - 48). She worked with the scientists, made field and flight trips into the unknown lands for mapping, and wrote all official diaries, reports and articles on the expedition. For her heroic accomplishments, the Ronne Ice Shelf in Antarctica, the world's second largest, was named for her.



Jackie was born and raised in very modest household in Baltimore, graduating from Eastern High School. She transcended her humble beginnings to graduate from George Washington University in D.C.; gather countless awards and honors; meet world leaders and fellow global explorers; and become a renowned hero, lecturer, author and advocate for the Antarctic's future.



My life was enriched by being able to share with her in many adventures and expeditions, from the high Arctic near the North Pole, to the Antarctic, visiting the remote base where she made history. She was charming, personable, and loved by all she met. What a life!

Karen Ronne Tupek
October 19, 2017

www.RonneAntarcticExplorers.com



HIV REMAINS A
**LEADING
CAUSE**
— OF DEATH IN —
10-19 YEAR OLDS
IN AFRICA

Source: UNAIDS 2017

— BOTSWANA HAS
WORLD'S THIRD
HIV
PREVALENCE RATE

— IN LESOTHO
**OVER
HALF**
OF THE POPULATION
ARE LIVING IN
POVERTY

82%
OF ADOLESCENTS
LIVING WITH HIV ARE
FROM SUB-SAHARAN
AFRICA

moreonline..

Sentebale

The Prince's Foundation for children in Africa



Sentebale is a charity founded by Prince Harry and Prince Seeiso in 2006 following Prince Harry's gap year to Lesotho in 2004.

We help the most vulnerable children in Lesotho and Botswana get the support they need to lead healthy and productive lives. Sentebale works with local grassroots organisations to help these children – the victims of extreme poverty and the HIV/AIDS epidemic. Together, we're making a big difference to these children's lives. We can do even more with your help.



**HELP THE CHILDREN OF
LESOTHO AND BOTSWANA TO
BUILD A BRIGHTER FUTURE**



**GIVE HOPE WITH A
DONATION TODAY**

info@sentebale.org



Founding Patrons: Prince Harry, Prince Seeiso

Board of Trustees: Philip Green CBE (Chairman), Tim Boucher, Dame Nicola Brewer, The Rt Hon the Baroness Chalker of Wallasey, Dr Tsitsi Chawatama, Mark Dyer, MVO, Johnny Hornby, Damian West

Management Team: Cathy Ferrier, Palesa Mphohle

KEEP IN TOUCH

DONATE NOW

Tel: +266 (22) 324 673, Fax: +266 (22) 324 674

www.sentebale.org



USA
FENCING

ENGAGE

Eleven U.S. Fencers Advance to the Second Day at the Baltimore World Cup

With only one fencer exempt from the pool rounds, Team USA had 11 total fencers advance through the preliminary day of competition at the Baltimore Women's Sabre World Cup on Friday to compete in the table of 64 on Saturday.

Competition on Saturday begins with the table of 64 at 10 a.m. The semi and final rounds begin at 6 p.m.

All bouts will be streamed live at www.youtube.com/usafencing.

Rio Olympic team bronze medalist **Dagmara Wozniak (Avenel, N.J.)** earned Team USA's first position in the table of 64 as an exempt fencer due to her top-16 seed in the tournament. On Saturday, Wozniak will begin her day with a 64 bout against **Karen Ngai Hing Chang (HKG)**.

Her Rio teammate, **Monica Aksamit (Matawan, N.J.)**, fenced in the pool rounds on Friday and won six straight bouts to advance directly to the second day of competition.

Aksamit drew a challenging pool that included former Senior World medalist **Bogna Jozwiak (POL)** and **Tori Johnson (Peachtree City, Ga.)**, a 2017 Cadet World Team member who is in contention for the 2018 Senior World Team as the No. 6 senior fencer in the nation.

Aksamit won all six of her bouts to secure her position as the No. 23 seed in the 64.

"I was fencing well, moving well, making strong, confident decisions, so it definitely feels good," Aksamit said.

Prior to the World Cup, Aksamit, Wozniak and their teammates participated in an international training camp in Maryland which she said helped prepare Team USA for the event.

"It was great. We had the Japanese, Ukrainians, the French, so it was good bouting through and through," said Aksamit who noted that she enjoys the opportunity to fence in the United States during one of the eight stops on the World Cup circuit. "We have a good turnout, so there's a lot of people cheering for you here. It's incredible. Seeing the world is great, but it's nice to be

here, understanding the lay of the land, knowing who's here. I'm more comfortable with it."

On Saturday, Aksamit will fence 2016 Cadet World medalist **Sarah Noutcha (FRA)** in the table of 64.

"Tomorrow's a new day, so tough to say what will happen. I can't look at today and go 'oh, okay I was fencing great today so that means I'll be fencing great tomorrow,' but it's obviously a good feeling and it's good to go in with confidence knowing that today I was able to move well and make those right decisions and fenced well today," Aksamit said.

Eliza Stone (Chicago, Ill.) also got the tournament off to a good start with

a 5-1 pool finish, dropping her sole bout of the day by a 5-4 margin.

The 2014 Senior World Team Champion is seeded 25th and will fence **Bhavani Devi Chadalavada Anandha Sundhararaman (IND)** in the 64.

Eight members of Team USA advanced to the second day through wins in the preliminary tables with the stakes high as athletes eye qualification points for the 2018 Senior, Junior and Cadet World Teams.

A two-time Cadet World Team member, **Sarah Merza (Wayne, N.J.)** just missed the cut for the top 16 with a 5-1 result in pools. Seeded first in the preliminary DE tables, the Ohio State junior earned a bye into the preliminary



Monica Aksamit finished pools with a perfect record to advance to the table of 64. Photo Credit: Manky / Bizzi

table of 64 where she defeated teammate **Veronica Czyzewski (Caldwell, N.J.)** Merza will fence **Michela Battiston (ITA)** in the 64 on Saturday.

Two-time Junior World team medalist **Francesca Russo (Wayne, N.J.)** also finished 5-1 and earned her first trip to the 64 this season with a 15-11 win over teammate **Alexis Anglade (Alpharetta, Ga.)** On Saturday, the Notre Dame senior will fence **Sooyeon Choi (KOR)** in the table of 64.

Ranked No. 7 in the United States, **Kamali Thompson (Teaneck, N.J.)** is hoping a high finish in Baltimore will aid in her bid to qualify for her first Senior World Team as one of the top four U.S. fencers in the nation later this year. The 2016 National Champion went 4-2 in pools and bested 2014 Junior World Championships bronze medalist **Gracie Stone (Chicago, Ill.)** to make the 64. On Saturday, Thompson will fence **Martina Criscio (ITA)** - a 2017 Senior World Team Champion who won individual bronze at this event last year.

Air Force Academy sophomore **Leanne Singleton-Comfort (Marysville, Calif.)** qualified for the top 64 at her second ever World Cup appearance when this event was held in Brooklyn last year and continued her success in Baltimore. After a 4-2 pool finish, Singleton-Comfort defeated 2015 Junior World Team Cham-

pion **Sofia Ciaraglia (ITA)** and will fence 2017 World University Games bronze medalist **Misaki Emura (JPN)** in the 64.

Zara Moss (Cranberry Township, Pa.), a 2017 Junior World Team member, is aiming to qualify for both the junior and senior teams in 2017. After earning a top-64 result at her first Senior European World Cup in Athens last year to qualify for the 2017 Junior World Team, the Penn State freshman has won four Division North American Cups in just over a year and earned top-64 results in both Orleans and St. Niklaas last fall to climb the U.S. rankings to No. 5. On Friday, Moss finished 4-2 in pools and bested 2007 Senior World medalist **Bogna Jozwiak (POL)**, 15-6, to earn a spot in the 64. Moss will fence 2017 Senior World Team Champion **Loretta Gulotta (ITA)** in the 64 on Saturday.

Ranked fourth behind Moss in the Junior National Point Standings, 2017 Cadet World bronze medalist **Elizabeth Tartakovsky (Livingston, N.J.)** earned her first career trip to the table of 64 at a Senior World Cup event on Friday. Tartakovsky finished the pools at 4-2 and defeated teammate **Daniella Timofeyev (Antelope, Calif.)**, 15-9, and **Daeun Park (KOR)** to advance to the 64 where she will fence two-time individual Senior World medalist **Irene Vecchi (ITA)**.

One of Moss and Tartakovsky's top opponents for those positions on Team USA is **Chloe Fox-Gitomer (Portland, Ore.)** - her teammate with both athletes on the 2017 Junior World squad. A high school senior, Fox-Gitomer is now the No. 3-ranked senior and No. 2-ranked junior in the nation. With a 3-3 pool finish, Fox-Gitomer would need two victories to qualify for the second day. She earned a decisive victory over two-time Junior World Team member **Celina Merza (Wayne, N.J.)** at 15-7, and picked up at 15-14 comeback win over **Xiaoye Jia (CHN)** to make the 64 where she will fence **Rossella Gregorio (ITA)** - a 2017 Senior World Team Champion who won medals at two of the first three events of the season.

Kara Linder (Chandler, Ariz.) - who fenced at the 2017 Junior Worlds with Moss, Tartakovsky and Fox-Gitomer - took on one of her top opponents in the Junior National Team Point Standings to claim a spot in the table of 64. A gold medalist in the mixed team event at the 2016 Cadet Worlds, Linder ended the pool rounds with a 3-3 record and defeated both **Shinhui Choi (KOR)** and **Ryan Jenkins (San Juan Capistrano, Calif.)** to make the second day. Linder will fence 2016 Olympic Champion **Yana Egorian (RUS)** in her opening bout on Saturday.

Results for U.S. fencers who did not advance to the second day of competition are as follows:

- 66. Ryan Jenkins (San Juan Capistrano, Calif.)
- 78. Gracie Stone (Chicago, Ill.)
- 83. Sydney Hirsch (Woodbridge, Conn.)
- 91. Veronica Czyzewski (Caldwell, N.J.)
- 92. Alexis Anglade (Alpharetta, Ga.)
- 96. Tori Johnson (Peachtree City, Ga.)
- 100. Alexis Browne (New City, N.Y.)
- 101. Maia Chamberlain (Menlo Park, Calif.)
- 103. Marta Lasota (Silver Spring, Md.)
- 104. Celina Merza (Wayne, N.J.)
- 106. Mikaela Avakian (Arcadia, Calif.)
- 123. Daniella Timofeyev (Antelope, Calif.)
- 125. Keli Izenon (Atlanta, Ga.)
- 126. Chloe Gouhin (Blacklick, Ohio)
- 128. Aleksandra Strzalkowski (Littleton, Colo.)
- 132. Skyla Powers (Atlanta, Ga.)
- 134. Amber White (Maplewood, N.J.)
- 139. Ryan Jenkins (San Juan Capistrano, Calif.)
- 146. Violet Michel (Cambridge, Mass.)
- 158. Casey Chan (Cresskill, N.J.)
- 161. Imogen Harrison (Portland, Ore.)

Contact:

Nicole Jomantas, 719.761.7909
N.Jomantas@usfencing.org

Visit:

<http://www.usafencing.org/18-world-cup-results> to view complete results.

USA Fencing | USAFencing.com



“Invisibility is an unnatural disaster”: Why funding the 2020 Census matters for Pacific Islanders



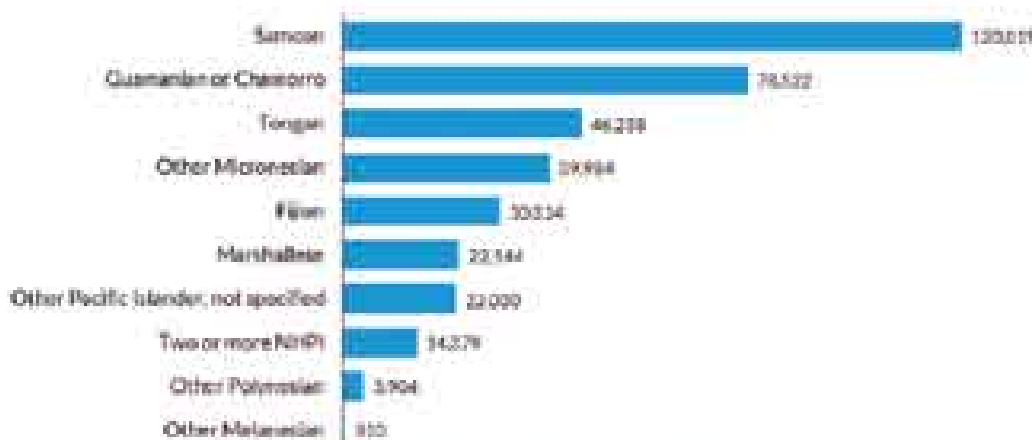
May is Asian Pacific American Heritage Month, a time to celebrate the collective identity and diversity of Asian Americans and Pacific Islanders (AAPI). Over the next month, Urban researchers explore data that shed light on challenges faced by distinct AAPI groups and how these groups strengthen their communities.

Over Tuesday, the director of the US Census Bureau, John H. Thompson, announced his intent to resign at the end of June instead of at the end of the year. His decision comes at a time of struggle for the Census Bureau, as it faces serious challenges with funding the decennial 2020 Census.

This news follows last week’s joint statement from several Asian American and Pacific Islander (AAPI)-led organizations on Census data collection and reporting standards. In a two-month mobilization effort, they collected over 3,600 public comments from 47 states and US territories urging the Office of Management and Budget (OMB) to update its standards to include more detailed data for Asian Americans, Native Hawaiians, and Pacific Islanders.

The term “Asian or Pacific Islander” first appeared in the 1990 decennial Census survey, but in 1997, the OMB issued a directive that the US government disaggregate the data further into “Asian” and “Native Hawaiian and Other Pacific Islander”-and for good reason. The catchall category “AAPI” is popular among researchers and race equity advocates, but can conflate the identities and issues of two distinct groups: Asian Americans and Pacific Islanders.

Pacific Islanders by Population, 2015

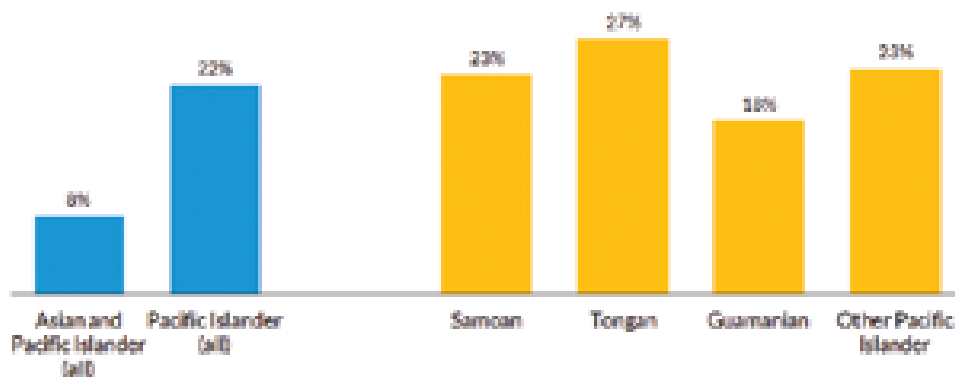


Source: 2011–15 five-year American Community Survey estimates via American FactFinder.
Note: NHPI = Native Hawaiian and Pacific Islander.

Unlike many Asian Americans, Pacific Islanders’ history in the United States “has been one of colonial contact and conquest, with the growth of plantation economies and the US military power in the Pacific playing important roles.” Although Asian Americans and Pacific Islanders often advocate collectively for common goals, this should not preclude policymakers from serving them as distinct communities with specific needs.

“Pacific Islanders” refer to communities whose origins are indigenous to Polynesia, Micronesia, and Melanesia.

16- to 24-Year-Olds Not Working or in School, Selected Populations, 2014



Source: 2010-14 five-year American Community Survey estimates via National Equity Atlas.

URBAN INSTITUTE

These groupings are made up of nearly 20 different communities, each with its own language, culture, and traditions: Chamorro, Chuukese, Fijian, Marshallese, Palauan, Samoan, Tahitian, Tongan, and others. According to American Community Survey estimates, their combined population is just under 379,000. The largest Pacific Islander communities live in Alaska, California, Hawaii, Utah, and Washington.

Because the Pacific Islander population is 45 times smaller than the Asian Ameri-

can population, using “Asian American” and “Asian Pacific Islander” interchangeably is functionally erasure.

For example, in 2014, the aggregate share of AAPI youth ages 16 to 24 who were not in school or working was 8 percent. If we break down that statistic, we see that the share of “opportunity youth” in Pacific Islander communities is much higher.

The way we collect and report data for Pacific Islanders can severely limit opportunities in their communities. Even though only 14 percent of Pacific Islanders had a bachelor’s degree or higher in 2014 (compared with 58 percent of East Asians and 73 percent of South Asians), they receive proportionally less in financial aid and scholarships.

Aggregate AAPI statistics sometimes communicate that Pacific Islanders are not necessarily underrepresented or disadvantaged in higher education. Disaggregated data, on the other hand, reveal both where Pacific Islanders face barriers and where they celebrate successes.

As the US population grows and shifts, funding the 2020 Census will be critical for organizations to run equitable programs, for policymakers to find evidence-based solutions, and for the public to access timely and relevant data on the characteristics of their changing communities. As Director Thompson testified at his 2013 nomination hearing, everyone benefits from collecting and reporting accurate information.

Decisions to disaggregate data or not—and the funding allocations required to make that possible—have real consequences for underserved populations. If Pacific Islanders are not counted as communities distinct from Asian American populations, they will be at risk of being overlooked in national conversations on higher education and much more.

When Congress decides on the Census budget, members should count the cost of excluding Pacific Islander voices and struggles. ■

Despite being the fastest-growing population in the United States, Asian Americans and Pacific Islanders (AAPI) are often overlooked or reported as a monolith in research on racial and ethnic disparities. Representation matters—and that’s especially true in policy research, where “invisibility is an unnatural disaster” (Mitsuye Yamada). Aggregate statistics obscure communities’ contributions and needs, so data disaggregated by ethnic origin are needed to change stereotypical narratives around AAPIs in every area of policy research.

Audience watching the stage performance at the 28th annual Lotus Street Festival on the shore of Echo Lake. This festival is a celebration of the region’s Asian and Pacific Islander communities, including live music, dance, art, and entertainment. (Photo by Ricardo DeAratanha/Los Angeles Times via Getty Images)

X X X X X X

To Know More....

Online Article Link: <https://www.urban.org/urban-wire/invisibility-unnatural-disaster-why-funding-2020-census-matters-pacific-islanders>

BALTIMORE
CENTER
STAGE

SEASON 2017/2018 MAINSTAGE

OFF CENTER

FAMILY

Buy
Tickets
BUY
TICKETS

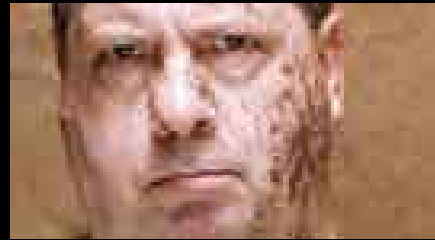


SKELETON
CREW

BOOK TICKETS

January 25–March 04

By Dominique Morisseau, Directed by Nicole A. Watson



ANIMAL FARM

BOOK TICKETS

March 01–April 01

Adapted by Ian Wooldridge, Directed by May Adrales



SOUL The Stax Musical

BOOK TICKETS

May 03–June 10

Book by Matthew Benjamin, Music and Lyrics by Various Stax Artists,
Directed by Kwame Kwei-Armah, Produced in association with Stuart
Benjamin and Concord Music



LOOKINGGLASS
ALICE

March 01–April 01

Adapted by David Catlin from the works of Lewis Carroll
Directed by Jeremy B. Cohen



THE
CHRISTIANS

September 07–October 08

By Lucas Hnath, Directed by Hana S. Sharif



SHAKESPEARE
WIDOW

October 19–November 15

Based on the screenplay by Marc Norman & Tom Stoppard
Adapted for the stage by Lee Hall, Directed by Blake Robison

Box Office: 410.332.0033
Administration: 410.986.4000, info@centerstage.org

700 North Calvert Street
Baltimore, Maryland 21202

© Baltimore Center Stage 2018



Girls on the Run of Central Maryland Names Lisa Martin Energy Award Winner

Winner Shannon Biggs will Receive Award at Athleta Columbia Mall on January 27

Girls on the Run of Central Maryland is proud to announce that Shannon Biggs has been chosen as the winner of this year's Lisa Martin Energy Award. Named after the founder of Girls on the Run of Central Maryland, the Lisa Martin Energy Award is given annually to one coach who has shown incredible energy and commitment to Girls on the Run's mission - inspiring girls to be joyful, healthy, and confident.

Each year, Girls on the Run participants and their parents are invited to nominate a Girls on the Run coach for this award. Ms. Biggs received multiple nominations. Here are a few quotes from the nominations received:

"Shannon is an inspiring coach, teacher, and overall human being. She leads our girls by example, emphasizing kindness, individuality, and positivity. Her love of each of the girls and her belief in the value of Girls on the Run is evident every day. She is a wonderful advocate for young girls and has an incredible energy about her. Her enthusiasm, commitment, and her leadership embody exactly what you would want in a coach! She is one of a kind!"

"Shannon puts her heart and soul into each practice. She is extremely organized, and gives love to each and every girl! She knows each runner on a personal level and I know each of the girls feel comfortable going to her for anything!"
"She is cool! She smiles a lot."

"Shannon is such an inspiration to the girls and the assistant coaches! She encourages the girls to be their best and work hard, while holding them accountable with goal setting and self-reflection."

"Mrs. Biggs has brought this wonderful program to our school and been dedicated to our girls for many years! All of her hard work is greatly appreciated over the years!"

Shannon Biggs has served as a volunteer coach for Girls on the Run of Central Maryland since the Fall of 2010. This Spring marks her 16th season as a coach at Bollman Bridge Elementary School.

When asked why she coaches for Girls on the Run, Ms. Biggs said "Girls on the Run is one of my happy places. I love watching new friendships bloom. I love watching the girls support and encourage one another. I love how each season, they come up with an awesome way to help the community. I especially love the pride they feel after completing the 5K event. There really isn't another 5K like the GOTR 5K. I continue to coach season after season because I want to be a part of making memories for these girls that will last a lifetime."

The Lisa Martin Energy Award will be presented to Ms. Biggs on January 27, 2018 at 3:00 pm at the Athleta Columbia Mall store, as part of the Athleta G!rl Launch Party. The event will be held from 1:00 - 5:00 pm to celebrate the arrival of the Athleta G!rl line at the Columbia store. The highlight of this event will be a fashion show at 2:00 pm featuring Girls on the Run participants, coaches, and parents. In addition, Girls on the Run of Central Maryland will receive 10% of sales from the event. For more information about the January 27 event, visit <http://bit.ly/aglaunchparty>. •

About Girls on the Run

Based in Charlotte, NC, Girls on the Run is a nonprofit organization with local Councils in all 50 states. Founded in 1996 with 13 girls, Girls on the Run has now served more than one and a half million girls. Over the course of the ten-week program, girls in third to eighth grades develop essential skills to help them navigate their worlds and establish a lifetime appreciation for health and fitness. The program culminates with girls positively impacting their communities through a service project and being physically and emotionally prepared to complete a celebratory 5K event. With the largest 5K series by number of events in the world, Girls on the Run hosts more than 330 5Ks per year.

Girls on the Run was recently included as a top research-based program in a Social-Emotional Learning Guide developed by researchers at Harvard University and has been recognized by the National Afterschool Association (NAA) as one of the most influential after-school programs.

About Girls on the Run of Central Maryland

Girls on the Run of Central Maryland was founded in 2009 by Howard County resident Lisa Martin, and incorporated in 2010 as an independent council of Girls on the Run International. During its first season in Spring 2010, GOTR of Central Maryland served 42 girls in Howard County, Maryland. Since then, GOTR of Central Maryland has expanded its territory to include Carroll County, Maryland (2011) and has served more than 12,000 girls and hosted 15 celebratory 5k events. GOTR of Central Maryland currently serves approximately 2,200 girls annually at more than 60 sites throughout Carroll and Howard Counties.

For more information about registration for the Spring 2018 season of Girls on the Run, visit www.gotrcentralmd.org

Baltimore Center Stage Announces Skeleton Crew Cast and Artistic Team



Center Stage's State-of-the-Nation Play also Part of the Women's Voices Theater Festival

Baltimore Center Stage is pleased to announce the cast and artistic team for *Skeleton Crew*, the fourth play of the 2017/18 season.

Equally thought-provoking and relevant, *Skeleton Crew* is the story of four factory workers at the last exporting automobile factory in Detroit and their struggle to survive as the industry and their way of life disappears. Written by acclaimed playwright and author, Dominique Morisseau, *Skeleton Crew* is the third play in her Detroit trilogy. The first play of the trilogy, *Detroit '67* was featured at Baltimore Center Stage in the 2015/16 season.

"Both then and now, Dominique's portrayal of the human beings who live their lives as major historical events unfold around them, show us just how powerful theater, and storytelling, can really be," said Artistic Director Kwame Kwei-Armah.

Skeleton Crew is presented as a part of the Women's Voices Theater Festival, whose mission is to highlight plays written by women, and the range of professional theaters that works by women are being produced in and around the Baltimore/Washington region.

"When I was new to this country, Dominique Morisseau was the first US playwright I collaborated with-and she is still one of the strongest and most brilliant writers I have ever had the pleasure to know," said Kwei-Armah. "The fact that my last play as Artistic Director at Baltimore Center Stage is one of hers, makes me feel like my entire tenure in Baltimore-my second artistic home-has come full circle."

Nicole A. Watson directs this compelling and riveting look inside of the

struggle of a changing American way of life during a pivotal time in our country. Set amid the collapse of the auto industry around 2008, *Skeleton Crew* resonates with themes of survival, strength and resilience, and also touches upon racial and economic disparities in American culture. Baltimore Center Stage, in its continuation of its "Season of Community" has partnered with local labor unions to share the working-class viewpoint in *Talk Backs* during the production.

The *Skeleton Crew* cast includes Brittany Bellizeare* (Shanita), Stephanie Berry* (Faye), Sekou Laidlow* (Reggie) and Gabriel Lawrence* (Dez). The artistic team includes director Watson, Mariana Sanchez (Scenic Designer), Karen Perry (Costume Designer), Burke Brown (Lighting Designer), Darron L. West (Sound Designer), and Faedra Chatard Carpenter (Production Dramaturg). ■

*Member of Actors' Equity Association

Skeleton Crew begins Thursday, January 25, with previews through February 4, and closes Sunday, March 4. Press night is Opening Night, Thursday, February 1. For more information, visit www.centerstage.org or call the box office at 410.332.0033.

Skeleton Crew is made possible by the William L. and Victorine Q. Adams foundation and the Rodgers Family Fund. This performance is supported in part by a grant from the Maryland State Arts Council (MSAC). Center Stage's Season Sponsor is M&T Bank and the season is also made possible by The Shubert Foundation and the Baltimore County Commission on Arts and Sciences.



About Baltimore Center Stage

Baltimore Center Stage is a professional, nonprofit institution committed to entertaining, engaging and enriching audiences through bold, innovative and thought-provoking classical and contemporary theater. Named the State Theater of Maryland in 1978, Baltimore Center Stage has steadily grown as a leader in the national regional theater scene. Under the leadership of Artistic Director Kwame Kwei-Armah OBE and Managing Director Michael Ross, Baltimore Center Stage is committed to creating and presenting a diverse array of world premieres and exhilarating interpretations of established works.

Baltimore Center Stage believes in access for all-creating a welcoming environment for everyone who enters its theater doors and, at the same time, striving to meet audiences where they are. In addition to its Mainstage and Off Center productions in the historic Mount Vernon neighborhood, Baltimore Center Stage ignites conversations among a global audience through digital initiatives, which explore how technology and the arts intersect. The theater also nurtures the next generation of artists and theater-goers through the Young Playwrights Festival, Student Matinee Series and many other educational programs for students, families and educators.

Box Office: 410.332.0033

Administration: 410.986.4000, info@centerstage.org

700 North Calvert Street

Baltimore, Maryland 21202



presents

10th Year
Anniversary Celebration

Women of Impact *Gala*



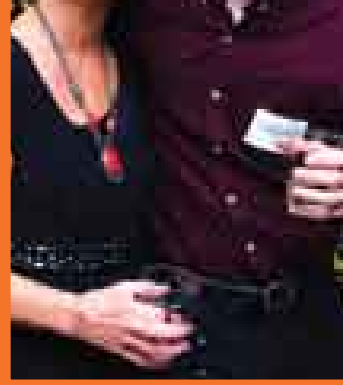
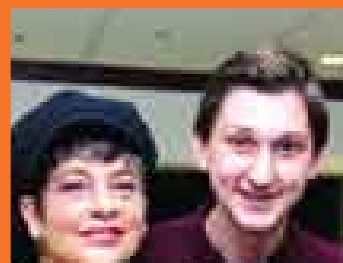
With Appreciation and With Gratitude, Focus on Women Magazine, celebrates Karen Tupek, daughter of Jackie Ronne, a Gala Sponsor, a Torch Bearer and Legacy Builder of Jackie Ronne, an esteemed Polar Arctic explorer and New York Times reporter, whose namesake is the Ronne Arctic Shelf. Thank you Karen for your immeasurable support of our cause and for accepting Jackie's posthumous Focus on Women Magazine 2017 Women of Impact Award.



Place: *Baltimore Inner Harbor World Trade Center*



Proceeds to Benefit Focus on Women Magazine's Domestic Violence and Women's Micro Credit Enterprise Fund.

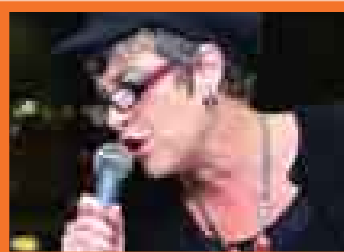


**YEAR'S
THEME**
**Resilience: The
Indomitable
Spirit of a
Woman**

*Do not miss this event... where local, national and international women will meet, gather, connect and greet. It promises to be a sell out. **Get your tickets now. call: 410-630-1224***



**SPECIAL
AWARDEE !!
SPONSORSHIP OPPORTUNITIES**



**To promote your BOOKS ONLINE and in PRINT,
Join our eBOOKSTORE**

*CONTACT: info@focusonwomenmagazine.net
Sponsorship Opportunities: shewhoascends@gmail.com*

*eBOOKSTORE 2018

Book's ePreview Online

Now a simple way of chance for every Author Experience's sharing with our readers. By posting your Book on our site, and chance to tell our readers about your favorite review. Were real readers like it!

**400 + Author
Book's Online ...**



Author Quotes

As my book came near to completion, I met Joslyn Wolfe of "Focus On Women Magazine." Although it does cost some money to join, I found that getting exposure and sales through her eBookStore provided me with the much needed exposure and confidence that my message had value and meaning to the women who bought my book. That was its original intent. Joslyn gave me an opportunity to sell my book in a widely dominated female authored market, and I cannot thank her

✳️ [FOCUS ON WOMEN MAGAZINE](#) - (Joslyn Wolfe, Publisher)

The book I have been talking about is called "Men, Sex and Food - Why Hearing A Woman Can Lead To A Deeper Love" was designed to be read by men to educate them and teach them a very important skill. Precious few men have this skill called listening, and lack critical tools to understand what a woman REALLY needs from them to generate heart

✳️ [Rocky Krogfoss](#)

Author - *Men, Sex and Food - Why Hearing A Woman Can Lead To A Deeper Love*

✳️ [Cheryl Lynn](#)

Author - *Pretty Painted Picture...Little Girl Lost*

✳️ [Christine](#)

Author - *MANipulated Into Fear - by Marvela Dawnay*

✳️ [Aliah Uddin](#)

Author - *Her Demise*

✳️ [Consolee Nishimwe](#)

Author - *Tested to the Limit*

New Author BOOK'S



A Change of Habit
by *Patty Kogutek*

ISBN-10: 1452542813
ISBN-13: 9781452542812



Diagnosis Poverty
by *Marcella Wilson*

ISBN-10: 1938248767
ISBN-13: 978-1938248764



Finding the Rainbow
by Racheal Mcgrath

ISBN: 978-1542494557

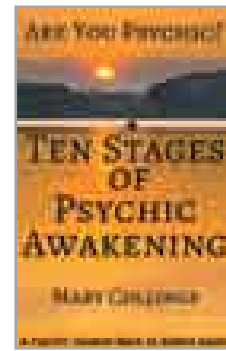
New



TRAPPED Visitor from Heaven
by Shirlee Hall

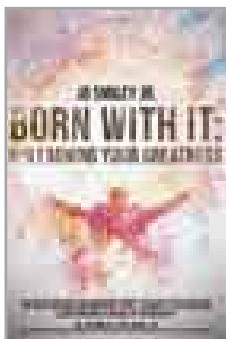
ISBN-10: 0984739084

ISBN-13: 978-0984739080



Are You Psychic? Ten Stages
of Psychic Awakening
by Mary Collings

ASIN: B00VVILR34



Born with it: Unleashing
your greatness
by JB Smiley

ASIN: B011JT3WTO



Dear Mom & Dad, I Have Anxiety
by Corine Toren

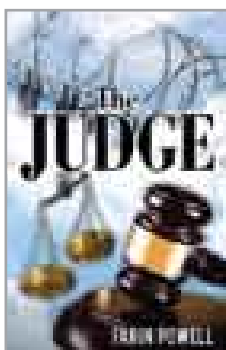
ASIN: B01140UYTY



Until We All Come Home
by Kim de Blecourt

ISBN-10: 1455515108

ISBN-13: 978-1455515103



The Judge
by Farin Powell

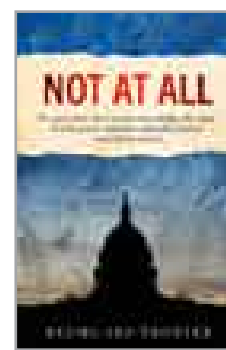
ASIN: B01L1U3Z00



The Book of Beautiful
Feelings
by Jenay D Zapparelli

ISBN-10: 0692757627

ISBN-13: 978-0692757628



Not at All
by Kyung Lee Trotter

ASIN: B01GVUF7UU

HUNAN MANOR PRESENTS



MARCH 5, 2018

Doors open at 5 p.m. ♦ Serving continuously from 5 to 8 p.m.

BENEFITING THE
Silas Craft Collegians
Scholarship Endowment & Program Funds
at Howard Community College

ONLY \$45 PER PERSON

Includes dinner, dessert, beverages, tax & gratuity

100% of net proceeds benefit
student scholarships

FOCUS ON DOROTHY CRAFT

In honor of the legacy of her husband, the Silas Craft Collegians program was established in 1999 at Howard Community College. The program aims to maximize academic achievement through personalized attention, mentoring, and leadership development. Mrs. Craft believes the program accurately reflects her husband's educational philosophy – staying centered on the student. "There are many people who have good minds, but need support in order to reach their potential. The Silas Craft Collegians learning community gives them the opportunity to become the type of people they need to be for the world," Mrs. Craft says. "When you know you have someone 'holding the ladder', you are motivated to climb higher, to apply yourself." The annual fundraising event raises money for the program endowment and Mrs. Craft attends each year.



HOWARD COMMUNITY COLLEGE
 **EDUCATIONAL
FOUNDATION**
Funding Pathways to Success

 **HUNAN MANOR**
RESTAURANT
OF COLUMBIA
7091 Deepage Drive
Columbia, Maryland

443-518-1970 | howardcc.edu/sccathunan |  [supportHCC](https://www.facebook.com/supportHCC)



REAL NEWS *THEY* DON'T
WANT YOU TO KNOW.

WWW.100R.ORG

THE NEWS LATELY

Custody in Crisis: How Family Courts Nationwide Put Children in Danger

Blood Rubies: Violence and Death Behind "Responsibly Sourced" Gems

Washed Clean: How Blood Diamonds are Laundered for World Markets

READ AND DONATE. VIBRANT REPORTING DEPENDS ON YOU.